

HK 105 L6+L5

KNUCKLE BOOM CRANE



HIDROKON



Practicalness is With You!

HK 105 L6+L5 Knuckle Boom Crane

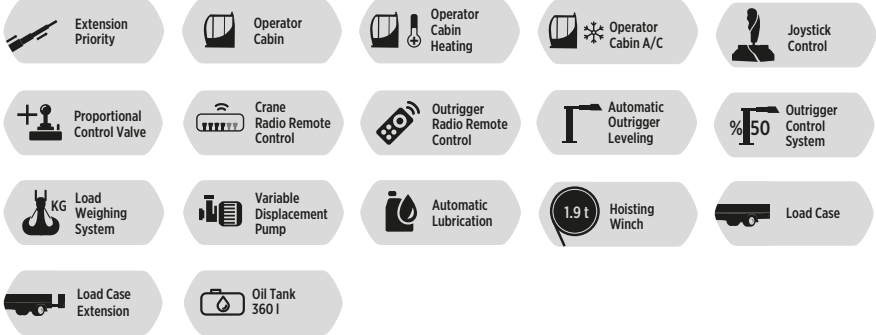
*With high quality equipment,
superior capability and
maximum safety features.*







FEATURES



Crane Attachments

● Available ✗ Not Available	Fly Jib	Hoisting Winch Single Line	Hoisting Winch Single Line	Hoisting Winch Single Line	Hoisting Winch Single Line
		1937 KG	3059 KG	3569 KG	4588 KG
HK 105	●	●	●	✗	✗

● Available ✗ Not Available	Counter Weight	Load Case Extension	5th-6th Stabilizers	Manual Extension Booms
HK 105	✗	●	✗	●

Other Attachments

Double Hook

Body Apparatus For Utility Pole

Hook Block - Single Sheave

Pallet Fork

Towing Equipment

Angular Extension Boom

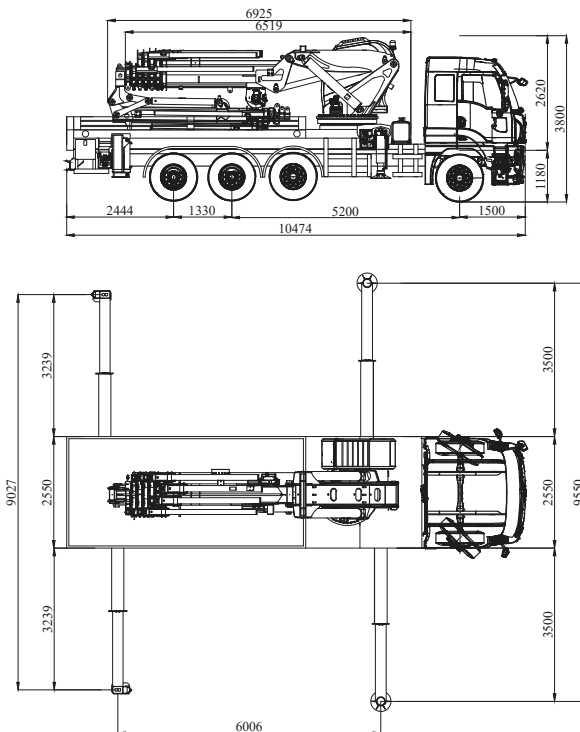
H Frame Lifting Beam

Angular Extension Boom
(Angle Adjustable)

Technical Specifications

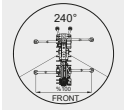
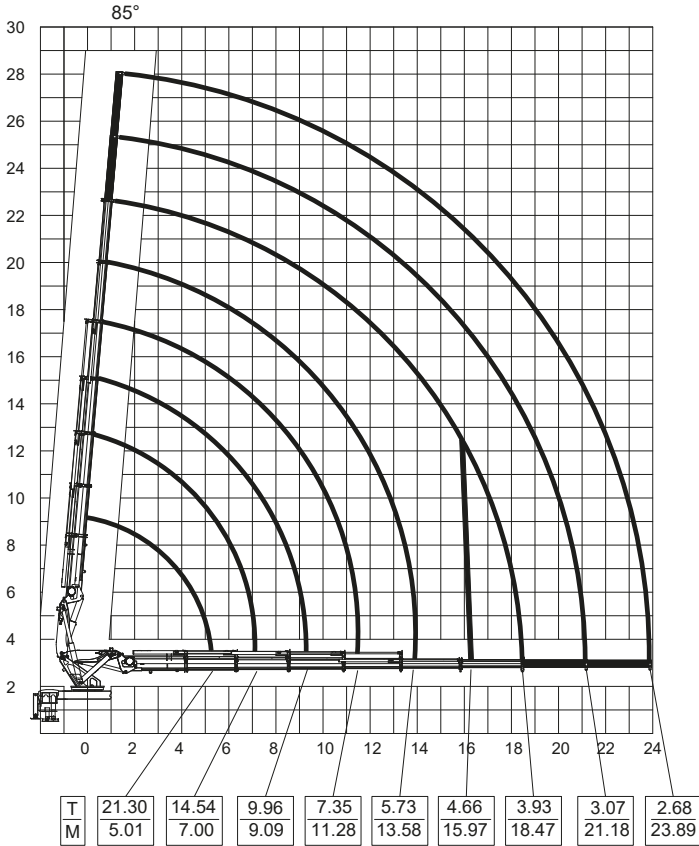
Max. Hydraulic Vertical Outreach	22.61 m	74' 2.15"
Max. Manual Vertical Outreach	28.01 m	91' 10.75"
Max. Hydraulic Vertical Outreach With Fly Jib	37.66 m	123' 6.67"
Max. Manual Vertical Outreach With Fly Jib	42.95 m	140' 10.94"
Working Pressure	290 bar	4206 psi
Rotation Angle	∞ (Endless)	∞ (Endless)
Number Of Hydraulic Extensions	6	6
Number Of Hydraulic Extensions Of Fly Jib	5	5
Number Of Manual Extensions	2	2
Number Of Manual Extensions Of Fly Jib	2	2
Oil Tank Capacity	360 l	360 l
Dead Weight (Std.)	18460 kg	40,697 lbs
Dead Weight (Std.) With Fly Jib	21160 kg	46,649 lbs

Dimensions (mm)



*Vehicle model selection may vary depending on country highway regulations, the image above is for illustration purposes only.

HK 105 L6+2 Lifting Capacity



Main Boom
1. Manual Ext.
Max 3070 kg

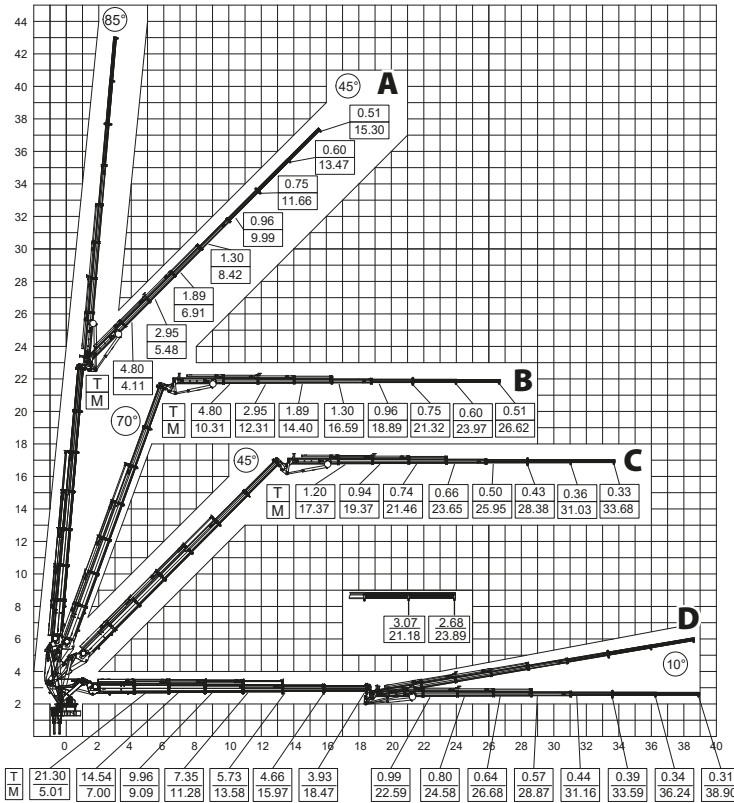
Main Boom
2. Manual Ext.
Max 2680 kg

- * Lifting capacities of the main boom are valid when manual extensions are not installed .
- * In vertical and horizontal distances , boom deflections are not calculated .
- * Subject to change without prior notice.
- * In the case of working in front of the cab area and / or on a surface where outrigger jacks are not balanced, all the responsibility belongs to the user.

max.	Feet&Inch	35000 kg	77,161 lbs
5.01 m	16' 5.24"	21300 kg	46,958 lbs
7.00 m	22' 11.59"	14540 kg	32,055 lbs
9.09 m	29' 9.87"	9960 kg	21,958 lbs
11.28 m	37' 0.09"	7350 kg	16,203 lbs
13.58 m	44' 6.64"	5730 kg	12,632 lbs
15.97 m	52' 4.74"	4660 kg	10,273 lbs
18.47 m	60' 7.16"	3930 kg	8,664 lbs
21.18 m*	69' 5.85"	3070 kg	6,768 lbs
23.89 m*	78' 4.55"	2680 kg	5,908 lbs

* Manual extension boom

HK 105 L6+L5+2 Lifting Capacity





FRONT

Main Boom
1. Manual Ext.

Max 3070 kg

Main Boom
2. Manual Ext.

Max 2680 kg

Jib Boom
1. Manual Ext.

Max 600 kg

Jib Boom
2. Manual Ext.

Max 510 kg

- * Lifting capacities of the main boom are to be considered when the fly jib is not installed.
- * In vertical and horizontal distances , boom deflections are not calculated .
- * Lifting capacities may vary around ± 5%
- * Subject to change without prior notice.
- * In the case of working in front of the cab area and / or on a surface where outrigger jacks are not balanced, all the responsibility belongs to the user.

A

FLY JIB	Feet&Inch	15000 kg	33,069 lbs
4.11 m	13' 5.81"	4800 kg	10,582 lbs
5.48 m	17' 11.74"	2950 kg	6,503 lbs
6.91 m	22' 8.04"	1890 kg	4,166 lbs
8.42 m	27' 7.49"	1300 kg	2,866 lbs
9.99 m	32' 9.30"	960 kg	2,116 lbs
11.66 m	38' 3.05"	750 kg	1,653 lbs
13.47 m*	44' 2.31"	600 kg	1,322 lbs
15.30 m*	50' 2.36"	510 kg	1,124 lbs

* Manual extension boom

HK 105 L6+L5+2 Lifting Capacity

B

FLY JIB	Feet&Inch	15000 kg	33,069 lbs
10.31 m	33' 9.90"	4800 kg	10,582 lbs
12.31 m	40' 4.64"	2950 kg	6,503 lbs
14.40 m	47' 2.92"	1890 kg	4,166 lbs
16.59 m	54' 5.14"	1300 kg	2,866 lbs
18.89 m	61' 11.70"	960 kg	2,116 lbs
21.32 m	69' 11.37"	750 kg	1,653 lbs
23.97 m*	78' 7.70"	600 kg	1,322 lbs
26.62 m*	87' 4.03"	510 kg	1,124 lbs

* Manual extension boom

C

FLY JIB	Feet&Inch	15000 kg	33,069 lbs
17.37 m	56' 11.85"	1200 kg	2,645 lbs
19.37 m	63' 6.59"	940 kg	2,072 lbs
21.46 m	70' 4.88"	740 kg	1,631 lbs
23.65 m	77' 7.10"	660 kg	1,455 lbs
25.95 m	85' 1.65"	500 kg	1,102 lbs
28.38 m	93' 1.32"	430 kg	947 lbs
31.03 m*	101' 9.65"	360 kg	793 lbs
33.68 m*	110' 5.98"	330 kg	727 lbs

* Manual extension boom

D

FLY JIB	Feet&Inch	15000 kg	33,069 lbs
22.59 m	74' 1.37"	990 kg	2,182 lbs
24.58 m	80' 7.71"	800 kg	1,763 lbs
26.68 m	87' 6.39"	640 kg	1,410 lbs
28.87 m	94' 8.61"	570 kg	1,256 lbs
31.16 m	102' 2.77"	440 kg	970 lbs
33.59 m	110' 2.44"	390 kg	859 lbs
36.24 m*	118' 10.77"	340 kg	749 lbs
38.90 m*	127' 7.49"	310 kg	683 lbs

* Manual extension boom