

HK 150 L8+L6

KNUCKLE BOOM CRANE



HIDROKON



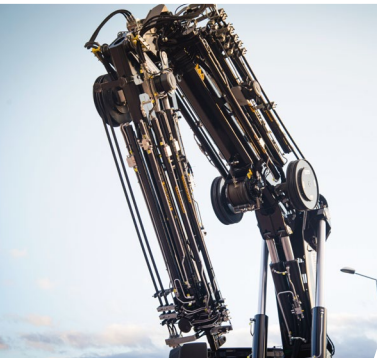
Hard Work is His Job!

HK 150 L8+L6 Knuckle Boom Crane

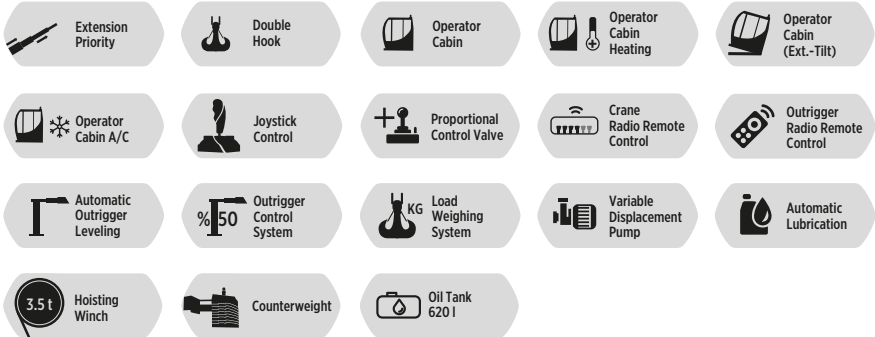
*With high quality equipment,
superior capability and
maximum safety features.*







FEATURES



Crane Attachments

● Available ✗ Not Available	Fly Jib	Hoisting Winch Single Line	Hoisting Winch Single Line	Hoisting Winch Single Line	Hoisting Winch Single Line
		1937 KG	3059 KG	3569 KG	4588 KG
HK 150	●	✗	●	●	✗

● Available ✗ Not Available	Counter Weight	Load Case Extension	5th-6th Stabilizers	Manual Extension Booms
HK 150	●	✗	●	●

Other Attachments

Double Hook

Body Apparatus For Utility Pole

Hook Block - Single Sheave

Pallet Fork

Towing Equipment

Angular Extension Boom

H Frame Lifting Beam

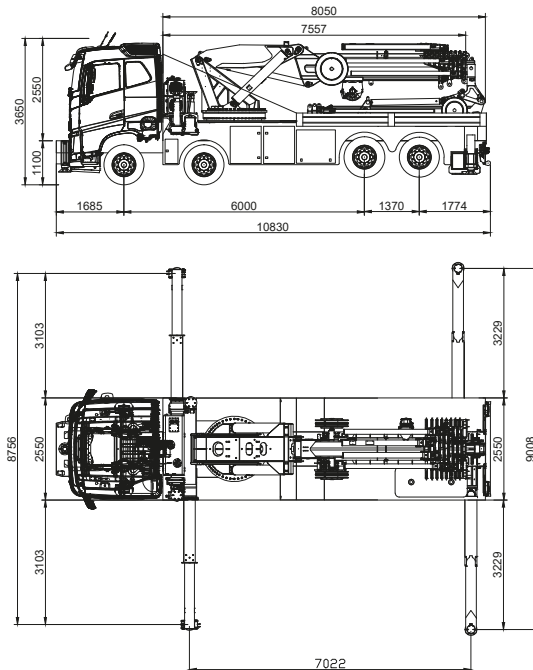
Angular Extension Boom
(Angle Adjustable)

Technical Specifications

Max. Hydraulic Vertical Outreach	27.39 m	89' 10.34"
Max. Manual Vertical Outreach	32.72 m	107' 4.18"
Max. Hydraulic Vertical Outreach With Fly Jib	46.09 m	151' 2.56"
Max. Manual Vertical Outreach With Fly Jib	51.52 m	169' 0.34"
Working Pressure	290 bar	4206 psi
Rotation Angle	∞ (Endless)	∞ (Endless)
Number Of Hydraulic Extensions	8	8
Number Of Hydraulic Extensions Of Fly Jib	6	6
Number Of Mechanical Extensions	2	2
Number Of Mechanical Extensions Of Fly Jib	2	2
Counter Weight	2 x 2000 kg	2 x 4409 lbs
Oil Tank Capacity	620 l	620 l
Dead Weight (Std.)	18407 kg	40,580 lbs
Dead Weight (Std.) With Fly Jib	21018 kg	46,336 lbs

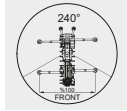
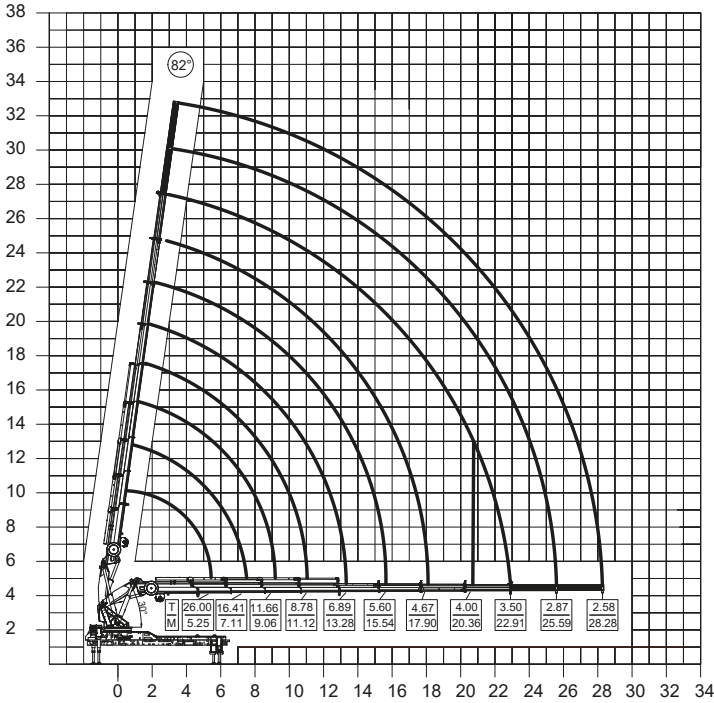
ATTENTION : Outreach distances and number of mechanical extensions are specific for back area load diagram.

Dimensions (mm)



*Vehicle model selection may vary depending on country highway regulations, the image above is for illustration purposes only.

HK 150 L8+2 Lifting Capacity (1)



Main Boom
1. Manual Ext.
Max 2870 kg

Main Boom
2. Manual Ext.
Max 2580 kg

* The back area.

* In vertical and horizontal distances, boom deflections are not calculated.

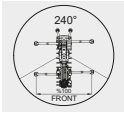
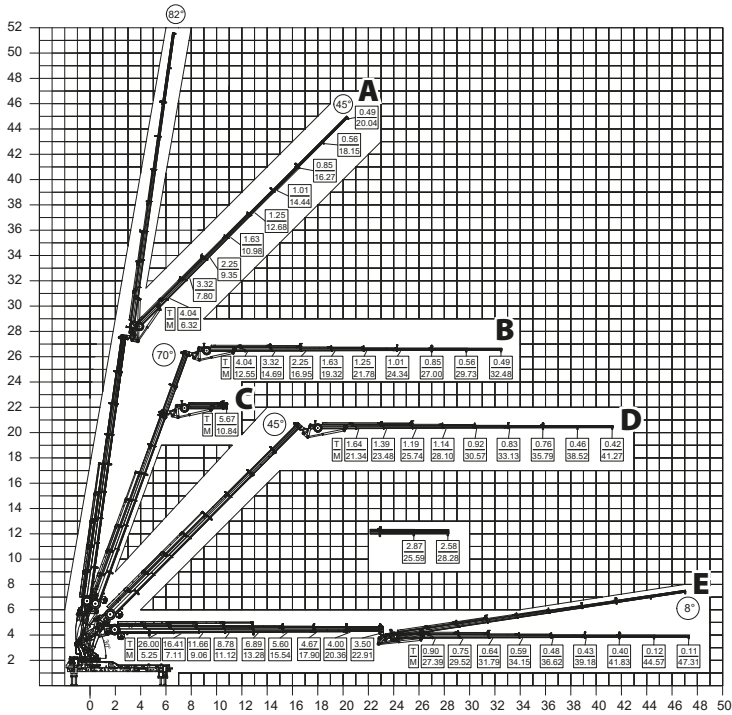
* Lifting capacities of the main boom are valid when manual extensions are not installed.

* Subject to change without prior notice.

max.	Feet&inch	50000 kg	110,231 lbs
5.25 m	17' 2.69"	26000 kg	57,320 lbs
7.11 m	23' 3.92"	16410 kg	36,177 lbs
9.06 m	29' 8.69"	11660 kg	25,705 lbs
11.12 m	36' 5.79"	8780 kg	19,356 lbs
13.28 m	43' 6.83"	6890 kg	15,189 lbs
15.54 m	50' 11.81"	5600 kg	12,345 lbs
17.90 m	58' 8.72"	4670 kg	10,295 lbs
20.36 m	66' 9.57"	4000 kg	8,818 lbs
22.91 m	75' 1.96"	3500 kg	7,716 lbs
25.59 m*	83' 11.48"	2870 kg	6,327 lbs
28.28 m*	92' 9.38"	2580 kg	5,687 lbs

* Manual extension boom

HK 150 L8+L6+2 Lifting Capacity (1.1)



Main Bom
1. Manual Ext.
Max 2870 kg

Main Bom
2. Manual Ext.
Max 2580 kg

Jib Bom
1. Manual Ext.
Max 560 kg

Jib Bom
2. Manual Ext.
Max 490 kg

- * The back area.
- * In vertical and horizontal distances, boom deflections are not calculated.
- * Fly jib load capacities are valid when manual extensions are not installed.
- * Subject to change without prior notice.

A

FLY JIB	Feet&Inch	27000 kg	59,524 lbs
6.32 m	20' 8.81"	4040 kg	8,906 lbs
7.80 m	25' 7.08"	3320 kg	7,319 lbs
9.35 m	30' 8.11"	2250 kg	4,960 lbs
10.98 m	36' 0.28"	1630 kg	3,593 lbs
12.68 m	41' 7.21"	1250 kg	2,755 lbs
14.44 m	47' 4.50"	1010 kg	2,226 lbs
16.27 m	53' 4.55"	850 kg	1,873 lbs
18.15 m*	59' 6.56"	560 kg	1,234 lbs
20.04 m*	65' 8.97"	490 kg	1,080 lbs

* Manual extension boom

HK 150 L8+L6+2 Lifting Capacity (1.1)

B

FLY JIB	Feet&Inch	27000 kg	59,524 lbs
12.55 m	41' 2.09"	4040 kg	8,906 lbs
14.69 m	48' 2.34"	3320 kg	7,319 lbs
16.95 m	55' 7.32"	2250 kg	4,960 lbs
19.32 m	63' 4.62"	1630 kg	3,593 lbs
21.78 m	71' 5.48"	1250 kg	2,755 lbs
24.34 m	79' 10.26"	1010 kg	2,226 lbs
27.00 m	88' 6.99"	850 kg	1,873 lbs
29.73 m*	97' 6.47"	560 kg	1,234 lbs
32.48 m*	106' 6.74"	490 kg	1,080 lbs

* Manual extension boom

C

FLY JIB	Feet&Inch	27000 kg	59,524 lbs
10.84 m	35' 6.77"	5670 kg	12,500 lbs

D

FLY JIB	Feet&Inch	17000 kg	37,478 lbs
21.34 m	70' 0.15"	1640 kg	3,615 lbs
23.48 m	77' 0.40"	1390 kg	3,064 lbs
25.74 m	84' 5.38"	1190 kg	2,623 lbs
28.10 m	92' 2.29"	1140 kg	2,513 lbs
30.57 m	100' 3.54"	920 kg	2,028 lbs
33.13 m	108' 8.33"	830 kg	1,829 lbs
35.79 m	117' 5.05"	760 kg	1,675 lbs
38.52 m*	126' 4.53"	460 kg	1,014 lbs
41.27 m*	135' 4.80"	420 kg	925 lbs

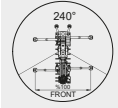
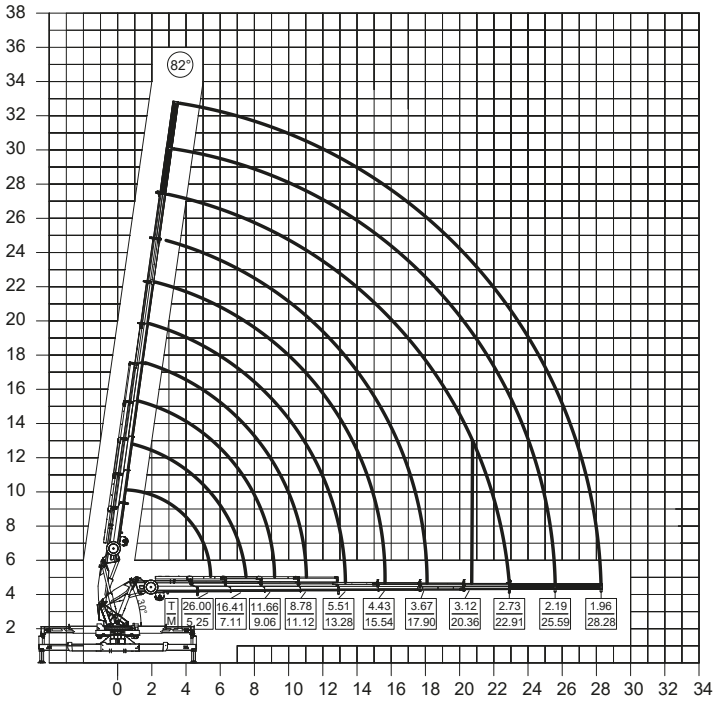
* Manual extension boom

E

FLY JIB	Feet&Inch	17000 kg	37,478 lbs
27.39 m	89' 10.34"	900 kg	1,984 lbs
29.52 m	96' 10.20"	750 kg	1,653 lbs
31.79 m	104' 3.57"	640 kg	1,410 lbs
34.15 m	112' 0.48"	590 kg	1,300 lbs
36.62 m	120' 1.73"	480 kg	1,058 lbs
39.18 m	128' 6.51"	430 kg	947 lbs
41.83 m	137' 2.85"	400 kg	881 lbs
44.57 m*	146' 2.72"	120 kg	264 lbs
47.31 m*	155' 2.59"	110 kg	242 lbs

* Manual extension boom

HK 150 L8+2 Lifting Capacity (2)



Main Boom
1. Manual Ext.
Max 2870 kg

Main Boom
2. Manual Ext.
Max 2580 kg

* The side area.

* In vertical and horizontal distances, boom deflections are not calculated.

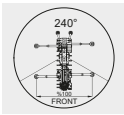
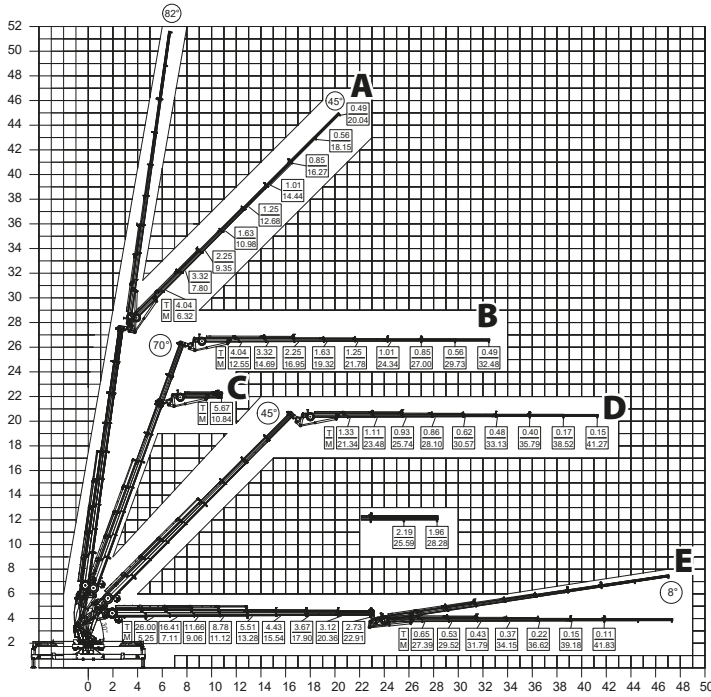
* Lifting capacities of the main boom are valid when manual extensions are not installed.

* Subject to change without prior notice.

max.	Feet&Inch	50000 kg	110,231 lbs
5.25 m	17' 2.69"	26000 kg	57,320 lbs
7.11 m	23' 3.92"	16410 kg	36,177 lbs
9.06 m	29' 8.69"	11660 kg	25,705 lbs
11.12 m	36' 5.79"	8780 kg	19,356 lbs
13.28 m	43' 6.83"	5510 kg	12,147 lbs
15.54 m	50' 11.81"	4430 kg	9,766 lbs
17.90 m	58' 8.72"	3670 kg	8,090 lbs
20.36 m	66' 9.57"	3120 kg	6,878 lbs
22.91 m	75' 1.96"	2730 kg	6,018 lbs
25.59 m*	83' 11.48"	2190 kg	4,828 lbs
28.28 m*	92' 9.38"	1960 kg	4,321 lbs

* Manual extension boom

HK 150 L8+L6+2 Lifting Capacity (2.1)



Main Boom
1. Manual Ext.
Max 2870 kg

Main Boom
2. Manual Ext.
Max 2580 kg

Jib Boom
1. Manual Ext.
Max 560 kg

Jib Boom
2. Manual Ext.
Max 490 kg

- * The side area.
- * In vertical and horizontal distances, boom deflections are not calculated.
- * Lifting capacities of the main boom are valid when manual extensions are not installed.
- * Subject to change without prior notice.

A

FLY JIB	Feet&Inch	27000 kg	59,524 lbs
6.32 m	20' 8.81"	4040 kg	8,906 lbs
7.80 m	25' 7.08"	3320 kg	7,319 lbs
9.35 m	30' 8.11"	2250 kg	4,960 lbs
10.98 m	36' 0.28"	1630 kg	3,593 lbs
12.68 m	41' 7.21"	1250 kg	2,755 lbs
14.44 m	47' 4.50"	1010 kg	2,226 lbs
16.27 m	53' 4.55"	850 kg	1,873 lbs
18.15 m*	59' 6.56"	560 kg	1,234 lbs
20.04 m*	65' 8.97"	490 kg	1,080 lbs

* Manual extension boom

HK 150 L8+L6+2 Lifting Capacity (2.1)

B

FLY JIB	Feet&Inch	27000 kg	59,524 lbs
12.55 m	41' 2.09"	4040 kg	8,906 lbs
14.69 m	48' 2.34"	3320 kg	7,319 lbs
16.95 m	55' 7.32"	2250 kg	4,960 lbs
19.32 m	63' 4.62"	1630 kg	3,593 lbs
21.78 m	71' 5.48"	1250 kg	2,755 lbs
24.34 m	79' 10.26"	1010 kg	2,226 lbs
27.00 m	88' 6.99"	850 kg	1,873 lbs
29.73 m*	97' 6.47"	560 kg	1,234 lbs
32.48 m*	106' 6.74"	490 kg	1,080 lbs

* Manual extension boom

C

FLY JIB	Feet&Inch	27000 kg	59,524 lbs
10.84 m	35' 6.77"	5670 kg	12,500 lbs

D

FLY JIB	Feet&Inch	27000 kg	59,524 lbs
21.34 m	70' 0.15"	1330 kg	2,932 lbs
23.48 m	77' 0.40"	1110 kg	2,447 lbs
25.74 m	84' 5.38"	930 kg	2,050 lbs
28.10 m	92' 2.29"	860 kg	1,895 lbs
30.57 m	100' 3.54"	620 kg	1,366 lbs
33.13 m	108' 8.33"	480 kg	1,058 lbs
35.79 m	117' 5.05"	400 kg	881 lbs
38.52 m*	126' 4.53"	170 kg	374 lbs
41.27 m*	135' 4.80"	150 kg	330 lbs

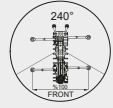
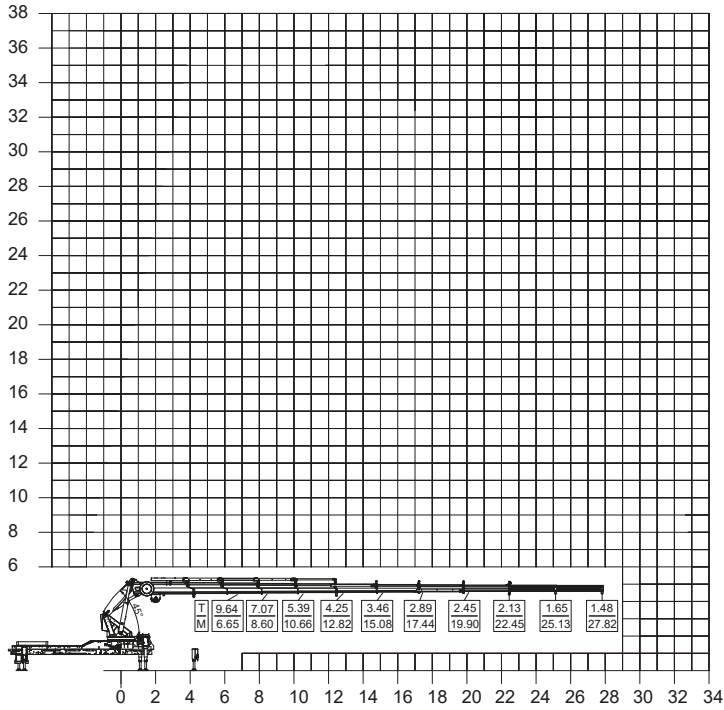
* Manual extension boom

E

FLY JIB	Feet&Inch	27000 kg	59,524 lbs
27.39 m	89' 10.34"	650 kg	1,433 lbs
29.52 m	96' 10.20"	530 kg	1,168 lbs
31.79 m	104' 3.57"	440 kg	970 lbs
34.15 m	112' 0.48"	370 kg	815 lbs
36.62 m	120' 1.73"	225 kg	496 lbs
39.18 m	128' 6.51"	150 kg	330 lbs
41.83 m	137' 2.85"	110 kg	242 lbs

* Manual extension boom

HK 150 L8+2 Lifting Capacity (3)



Main Bom
1. Manual Ext.
Max 2870 kg

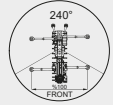
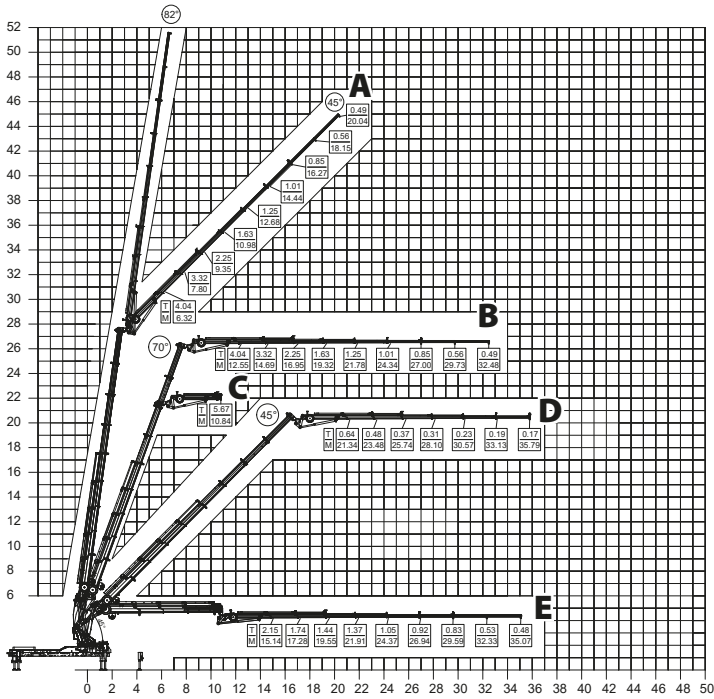
Main Bom
2. Manual Ext.
Max 2580 kg

- * The front area.
- * Counter Balance Weight: 4000 kg
- * In vertical and horizontal distances, boom deflections are not calculated.
- * Lifting capacities of the main boom are valid when manual extensions are not installed.
- * Subject to change without prior notice.

max.	Feet&Inch	50000 kg	110,231 lbs
6.65 m	21' 9.81"	9640 kg	21,252 lbs
8.60 m	28' 2.58"	7070 kg	15,586 lbs
10.66 m	34' 11.68"	5390 kg	11,882 lbs
12.82 m	42' 0.72"	4250 kg	9,369 lbs
15.08 m	49' 5.70"	3460 kg	7,627 lbs
17.44 m	57' 2.61"	2890 kg	6,371 lbs
19.90 m	65' 3.46"	2450 kg	5,401 lbs
22.45 m	73' 7.85"	2130 kg	4,695 lbs
25.13 m*	82' 5.37"	1650 kg	3,637 lbs
27.82 m*	91' 3.27"	1480 kg	3,262 lbs

* Manual extension boom

HK 150 L8+L6+2 Lifting Capacity (3.1)



Main Bom
1. Manual Ext.
Max 2870 kg

Main Bom
2. Manual Ext.
Max 2580 kg

Jib Bom
1. Manual Ext.
Max 560 kg

Jib Bom
2. Manual Ext.
Max 490 kg

- * The front area.
- * Counter Balance Weight: 4000 kg
- * In vertical and horizontal distances, boom deflections are not calculated.
- * Fly jib load capacities are valid when manual extensions are not installed.
- * Subject to change without prior notice.

A

FLY JIB	Feet&Inch	27000 kg	59,524 lbs
6.32 m	20' 8.81"	4040 kg	8,906 lbs
7.80 m	25' 7.08"	3320 kg	7,319 lbs
9.35 m	30' 8.11"	2250 kg	4,960 lbs
10.98 m	36' 0.28"	1630 kg	3,593 lbs
12.68 m	41' 7.21"	1250 kg	2,755 lbs
14.44 m	47' 4.50"	1010 kg	2,226 lbs
16.27 m	53' 4.55"	850 kg	1,873 lbs
18.15 m*	59' 6.56"	560 kg	1,234 lbs
20.04 m*	65' 8.97"	490 kg	1,080 lbs

* Manual extension boom

HK 150 L8+L6+2 Lifting Capacity (3.1)

B

FLY JIB	Feet&Inch	27000 kg	59,524 lbs
12.55 m	41' 2.09"	4040 kg	8,906 lbs
14.69 m	48' 2.34"	3320 kg	7,319 lbs
16.95 m	55' 7.32"	2250 kg	4,960 lbs
19.32 m	63' 4.62"	1630 kg	3,593 lbs
21.78 m	71' 5.48"	1250 kg	2,755 lbs
24.34 m	79' 10.26"	1010 kg	2,226 lbs
27.00 m	88' 6.99"	850 kg	1,873 lbs
29.73 m*	97' 6.47"	560 kg	1,234 lbs
32.48 m*	106' 6.74"	490 kg	1,080 lbs

* Manual extension boom

C

FLY JIB	Feet&Inch	27000 kg	59,524 lbs
10.84 m	35' 6.77"	5670 kg	12,500 lbs

D

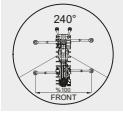
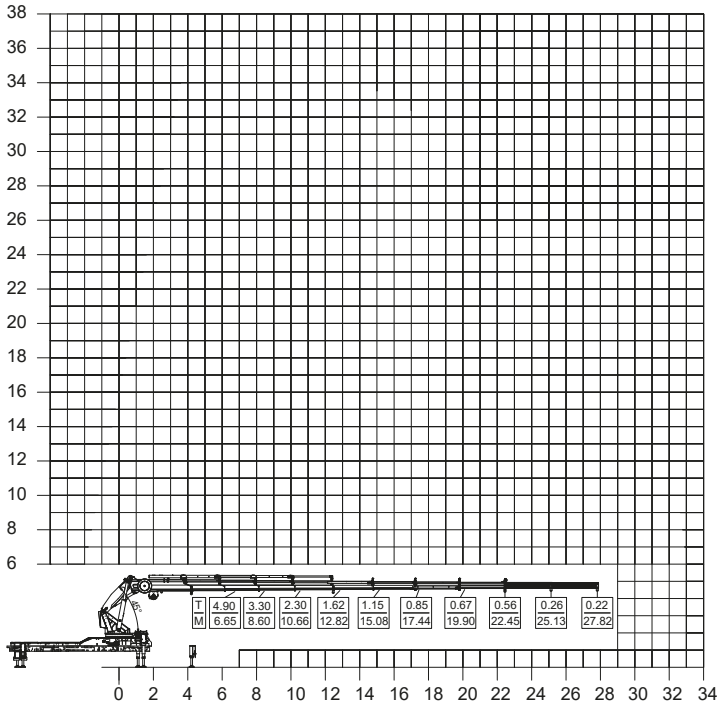
FLY JIB	Feet&Inch	27000 kg	59,524 lbs
21.34 m	70' 0.15"	640 kg	1,410 lbs
23.48 m	77' 0.40"	480 kg	1,058 lbs
25.74 m	84' 5.38"	370 kg	815 lbs
28.10 m	92' 2.29"	310 kg	683 lbs
30.57 m	100' 3.54"	230 kg	507 lbs
33.13 m	108' 8.33"	190 kg	418 lbs
35.79 m	117' 5.05"	170 kg	374 lbs

E

FLY JIB	Feet&Inch	27000 kg	59,524 lbs
15.14 m	49' 8.06"	2150 kg	4,739 lbs
17.28 m	56' 8.31"	1740 kg	3,836 lbs
19.55 m	64' 1.68"	1440 kg	3,174 lbs
21.91 m	71' 10.59"	1370 kg	3,020 lbs
24.37 m	79' 11.44"	1050 kg	2,314 lbs
26.94 m	88' 4.62"	920 kg	2,028 lbs
29.59 m	97' 0.96"	830 kg	1,829 lbs
32.33 m*	106' 0.83"	530 kg	1,168 lbs
35.07 m*	115' 0.70"	480 kg	1,058 lbs

* Manual extension boom

HK 150 L8+2 Lifting Capacity (4)



Main Bom
1. Manual Ext.
Max 2870 kg

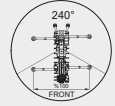
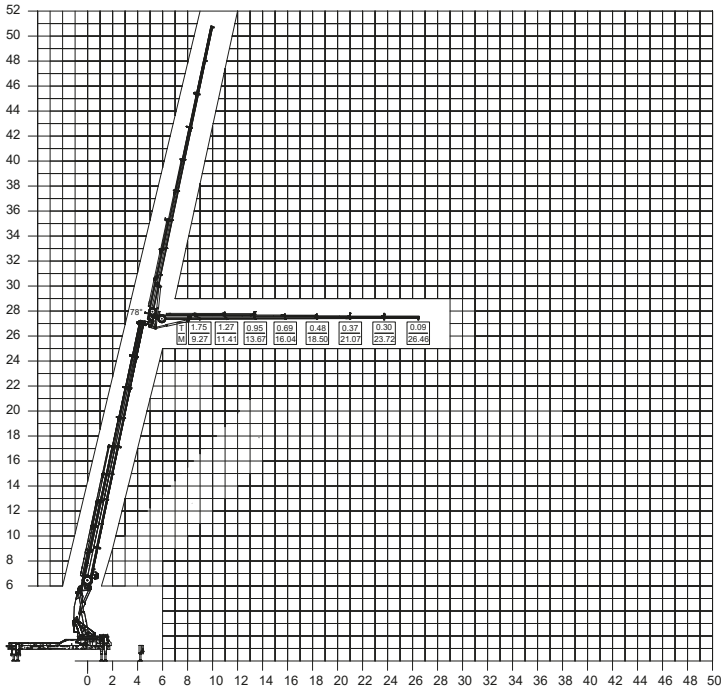
Main Bom
2. Manual Ext.
Max 2580 kg

- * The front area.
- * Counter Balance Weight: 0 kg
- * In vertical and horizontal distances, boom deflections are not calculated.
- * Lifting capacities of the main boom are valid when manual extensions are not installed.
- * Subject to change without prior notice.

max.	Feet&Inch	50000 kg	110,231 lbs
6.65 m	21' 9.81"	4900 kg	10,802 lbs
8.60 m	28' 2.58"	3300 kg	7,275 lbs
10.66 m	34' 11.68"	2300 kg	5,070 lbs
12.82 m	42' 0.72"	1620 kg	3,571 lbs
15.08 m	49' 5.70"	1150 kg	2,535 lbs
17.44 m	57' 2.61"	850 kg	1,873 lbs
19.90 m	65' 3.46"	670 kg	1,477 lbs
22.45 m	73' 7.85"	560 kg	1,234 lbs
25.13 m*	82' 5.37"	260 kg	573 lbs
27.82 m*	91' 3.27"	220 kg	485 lbs

* Manual extension boom

HK 150 L8+L6+1 Lifting Capacity (4.1)



Main Bom
1. Manual Ext.
Max 2870 kg

Main Bom
2. Manual Ext.
Max 2580 kg

Jib Bom
1. Manual Ext.
Max 560 kg

Jib Bom
2. Manual Ext.
Max 490 kg

- * The front area.
- * Counter Balance Weight: 0 kg
- * In vertical and horizontal distances, boom deflections are not calculated.
- * Fly jib load capacities are valid when manual extensions are not installed.
- * Subject to change without prior notice.

FLY JIB	Feet&Inch	27000 kg	59,524 lbs
9.27 m	30' 4.96"	1750 kg	3,858 lbs
11.41 m	37' 5.21"	1270 kg	2,799 lbs
13.67 m	44' 10.18"	950 kg	2,094 lbs
16.04 m	52' 7.49"	690 kg	1,521 lbs
18.50 m	60' 8.34"	480 kg	1,058 lbs
21.07 m	69' 1.52"	370 kg	815 lbs
23.72 m	77' 9.85"	300 kg	661 lbs
26.46 m*	86' 9.73"	90 kg	198 lbs

* Manual extension boom