

HK 20 K3

LOADER CRANE



HIDROKON



Agility is With You!

HK 20 K3 Loader Crane













*With high quality equipment,
superior capability and
maximum safety features.*







FEATURES

-  Proportional Control Valve
-  Crane Radio Remote Control
-  Outrigger Radio Remote Control
-  Automatic Outrigger Leveling
-  Outrigger Control System
-  Load Weighing System
-  Variable Displacement Pump
-  Automatic Lubrication
-  Hoisting Winch
-  Load Case
-  Load Case Extension
-  Oil Tank 132 l

Technical Specifications

Max. Hydraulic Vertical Outreach	14.76 m	48' 5.10"
Max. Manual Vertical Outreach	16.56 m	54' 3.96"
Working Pressure	350 bar	5076 psi
Rotation Angle	400°	400°
Number Of Hydraulic Extensions	3	3
Number Of Manual Extensions	1	1
Oil Tank Capacity	132 l	132 l
Dead Weight(Std.)	3250 kg	7,165 lbs



Crane Attachments

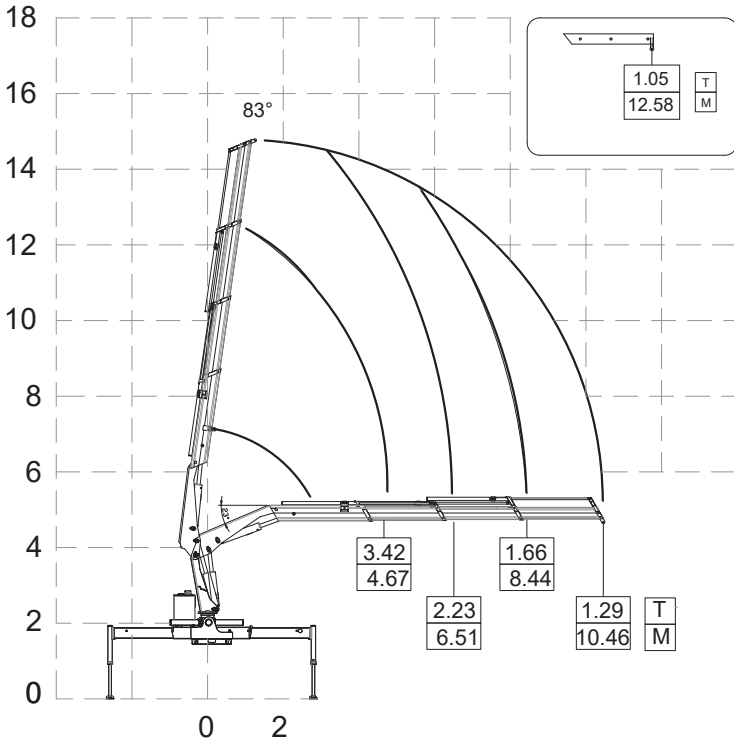
<ul style="list-style-type: none"> ● Available ✕ Not Available 	Hoisting Winch Single Line 1193 KG	Counter Weight	Load Case Extension	5th-6th Stabilizers	Manual Extension Booms
HK 20	●	✕	●	✕	●

Other Attachments

- Double Hook
- Body Apparatus For Utility Pole
- Hook Block - Single Sheave
- Pallet Fork

- Towing Equipment
- Angular Extension Boom
- H Frame Lifting Beam
- Angular Extension Boom (Angle Adjustable)

HK 20 K3 Lifting Capacity



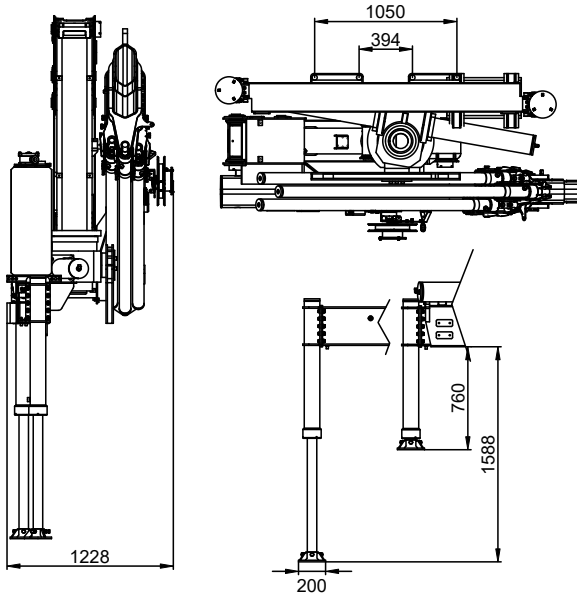
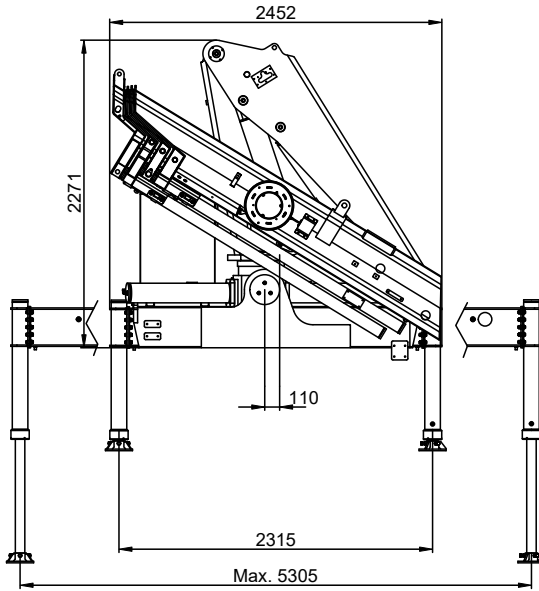
• Boom deflections are not taken into consideration.

*In the case of working in front of the cab area and / or on a surface where outrigger jacks are not balanced, all the responsibility belongs to the user.

max.	Feet&Inch	6666 kg	14,696 lbs
4.67 m	15' 3.85"	3420 kg	7,539 lbs
6.51 m	21' 4.29"	2230 kg	4,916 lbs
8.44 m	27' 8.28"	1660 kg	3,659 lbs
10.46 m	34' 3.81"	1290 kg	2,843 lbs
12.58 m*	41' 3.27"	1050 kg	2,314 lbs

* Manual extension boom

Dimensions (mm)



*Dimensions given may vary around $\pm 5\%$.