

HK 21 E6

LOADER CRANE



HIDROKON



Agility is With You!

HK 21 E6 Loader Crane





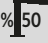







*With high quality equipment,
superior capability and
maximum safety features.*







FEATURES

-  Proportional Control Valve
-  Crane Radio Remote Control
-  Outrigger Radio Remote Control
-  Automatic Outrigger Leveling
-  Outrigger Control System
-  Load Weighing System
-  Variable Displacement Pump
-  Automatic Lubrication
-  Hoisting Winch
-  Load Case
-  Load Case Extension
-  Oil Tank 110 l

Technical Specifications

Max. Hydraulic Vertical Outreach	20.80 m	68' 2.89"
Max. Manual Vertical Outreach	23.10 m	75' 9.44"
Working Pressure	350 bar	5076 psi
Rotation Angle	∞ Endless	∞ Endless
Number Of Hydraulic Extensions	6	6
Number Of Manual Extensions	1	1
Oil Tank Capacity	110 l	110 l
Dead Weight(Std.)	3600 kg	7,937 lbs



Crane Attachments

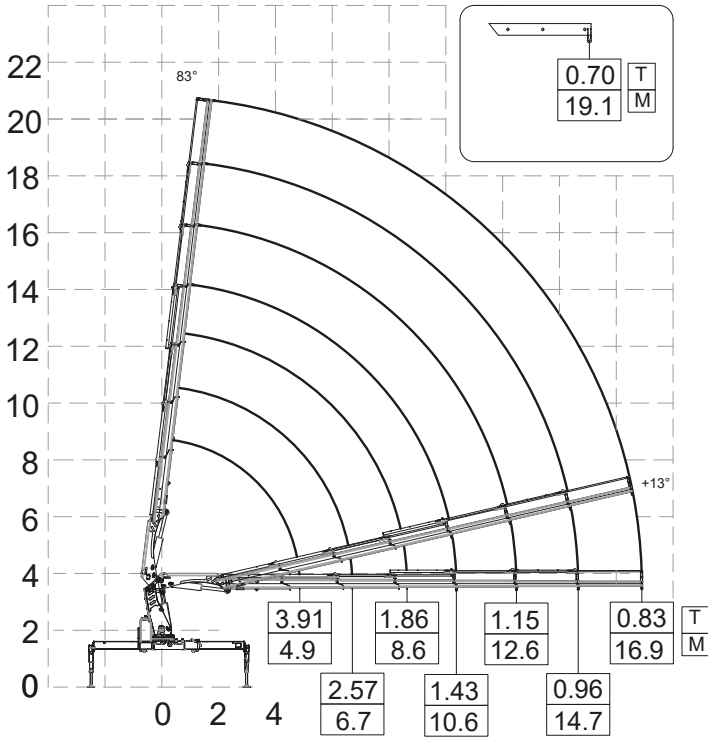
<ul style="list-style-type: none"> ● Available ✕ Not Available 	Hoisting Winch Single Line 1988 KG	Counter Weight	Load Case Extension	5th-6th Stabilizers	Manual Extension Booms
HK 21	●	✕	●	✕	●

Other Attachments

- Double Hook
- Body Apparatus For Utility Pole
- Hook Block - Single Sheave
- Pallet Fork

- Towing Equipment
- Angular Extension Boom
- H Frame Lifting Beam
- Angular Extension Boom (Angle Adjustable)

HK 21 E6 Lifting Capacity



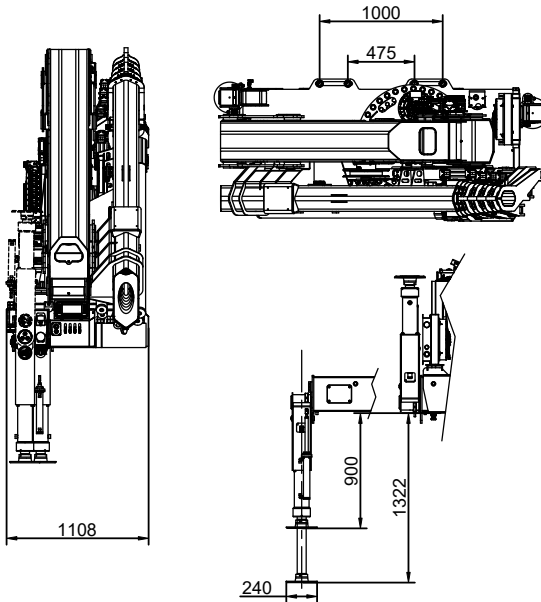
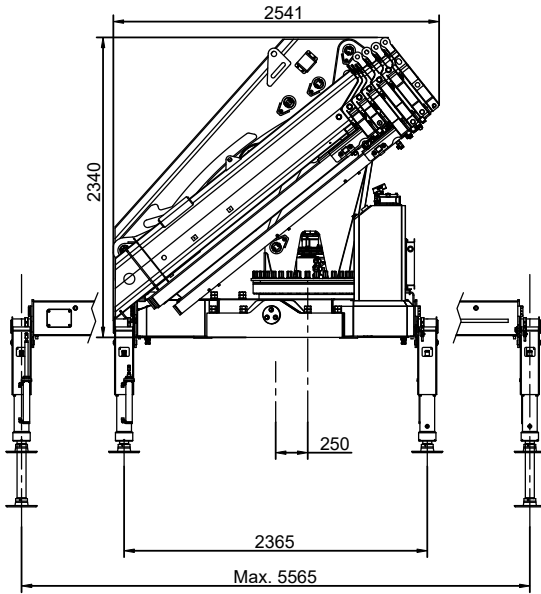
• Boom deflections are not taken into consideration.

*In the case of working in front of the cab area and / or on a surface where outrigger jacks are not balanced, all the responsibility belongs to the user.

max.	Feet&Inch	15000 kg	15,432 lbs
4.90 m	16' 0.91"	3910 kg	8,620 lbs
6.70 m	21' 11.77"	2570 kg	5,665 lbs
8.60 m	28' 2.58"	1860 kg	4,100 lbs
10.60 m	34' 9.32"	1430 kg	3,152 lbs
12.60 m	41' 4.06"	1150 kg	2,535 lbs
14.70 m	48' 2.74"	960 kg	2,116 lbs
16.90 m	55' 5.35"	830 kg	1,829 lbs
19.10 m*	62' 7.96"	700 kg	1,543 lbs

* Manual extension boom

Dimensions (mm)



*Dimensions given may vary around \pm %5.