

HK 210.00 S8+L5

KNUCKLE BOOM CRANE



HIDROKON



Power and Performance Together!

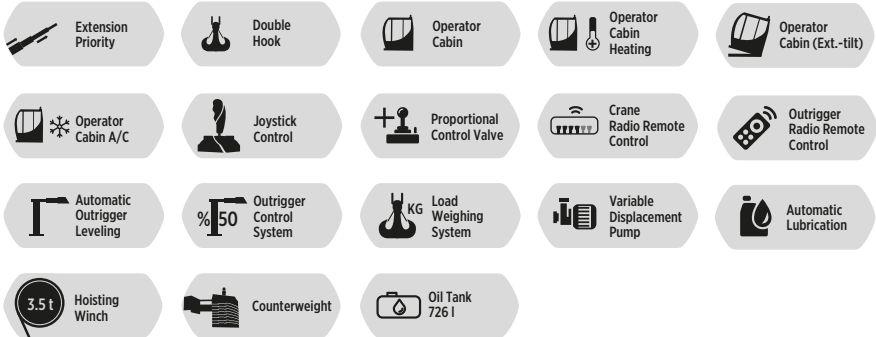
HK 210.00 S8+L5 Knuckle Boom Crane

*With high quality equipment,
superior capability and
maximum safety features.*





FEATURES



Crane Attachments

● Available ✗ Not Available	Fly Jib	Hoisting Winch Single Line	Hoisting Winch Single Line	Hoisting Winch Single Line	Hoisting Winch Single Line
		1937 KG	3059 KG	3569 KG	4588 KG
HK 210.00	●	✗	✗	●	●

● Available ✗ Not Available	Counter Weight	Load Case Extension	5th-6th Stabilizers	Manual Extension Booms
HK 210.00	●	✗	●	●

Other Attachments

Double Hook

Body Apparatus For Utility Pole

Hook Block - Single Sheave

Pallet Fork

Towing Equipment

Angular Extension Boom

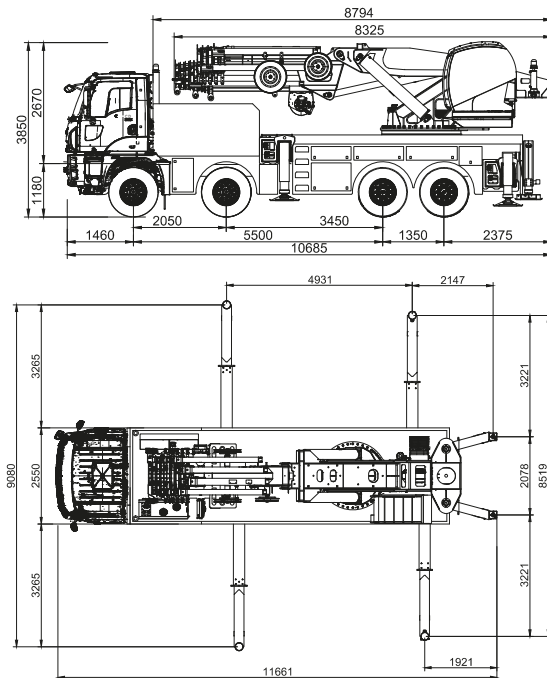
H Frame Lifting Beam

Angular Extension Boom
(Angle Adjustable)

Technical Specifications

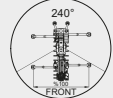
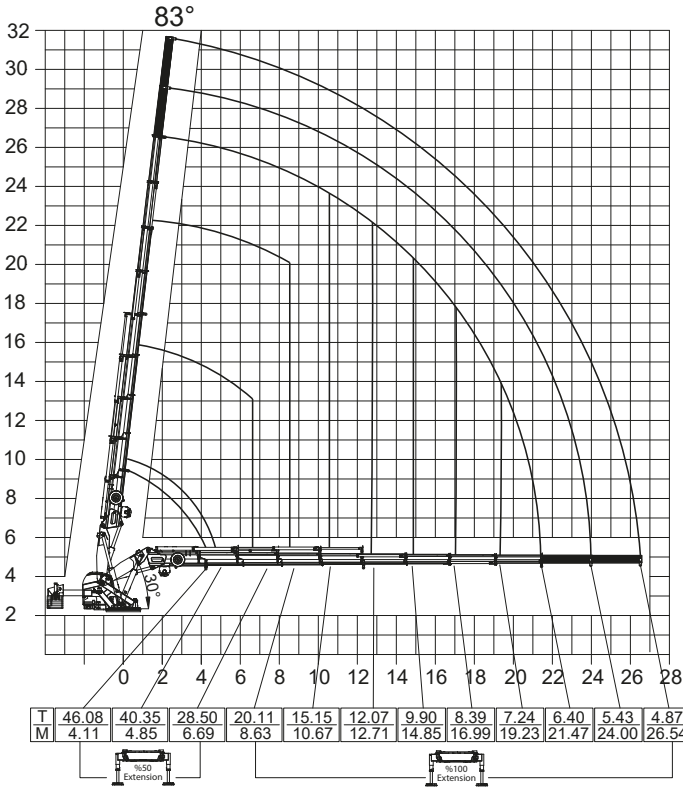
Max. Hydraulic Vertical Outreach	26.52 m	87' 0.09"
Max. Manual Vertical Outreach	31.56 m	103' 6.51"
Max. Hydraulic Vertical Outreach With Fly Jib	42.98 m	141' 0.12"
Max. Manual Vertical Outreach With Fly Jib	48.43 m	158' 10.69"
Working Pressure	300 bar	4351 psi
Rotation Angle	∞ Endless	∞ (Endless)
Number Of Hydraulic Extensions	8	8
Number Of Hydraulic Extensions Of Fly Jib	5	5
Number Of Manual Extensions	2	2
Number Of Manual Extensions Of Fly Jib	2	2
Counter Weight	6 x 1180 kg	6 x 2601 lbs
Oil Tank Capacity	726 l	726 l
Dead Weight (Std.)	26895 kg	59,293 lbs
Dead Weight (Std.) With Fly Jib	29645 kg	65,356 lbs

Dimensions (mm)



*Vehicle model selection may vary depending on country highway regulations, the image above is for illustration purposes only.

HK 210.00 S8+2 Lifting Capacity



Main Boom
1. Manual Ext.
Max 5430 kg

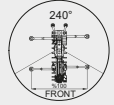
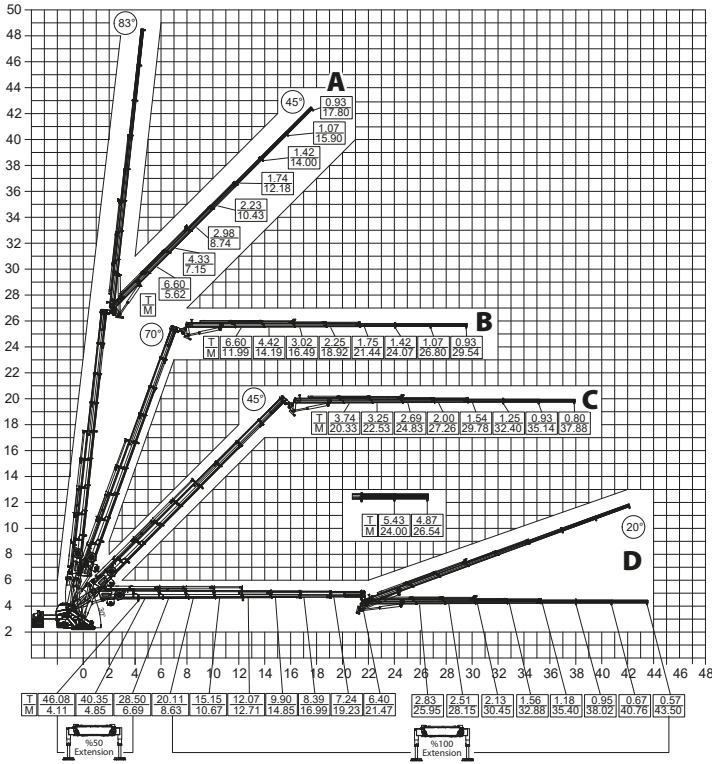
Main Boom
2. Manual Ext.
Max 4870 kg

- * Lifting capacities of the main boom are valid when manual extensions are not installed.
- * In vertical and horizontal distances, boom deflections are not calculated.
- * Lifting capacities may vary around $\pm 5\%$
- * Subject to change without prior notice.
- * In the case of working in front of the cab area and / or on a surface where outrigger jacks are not balanced, all the responsibility belongs to the user.

max.	Feet&inch	70000 kg	154,323 lbs
4.11 m	13' 5.81"	46080 kg	101,589 lbs
4.85 m	15' 10.94"	40350 kg	88,956 lbs
6.69 m	21' 11.38"	28500 kg	62,831 lbs
8.63 m	28' 3.76"	20110 kg	44,334 lbs
10.67 m	35' 0.07"	15150 kg	33,400 lbs
12.71 m	41' 8.39"	12070 kg	26,609 lbs
14.85 m	48' 8.64"	9900 kg	21,825 lbs
16.99 m	55' 8.89"	8390 kg	18,496 lbs
19.23 m	63' 1.08"	7240 kg	15,961 lbs
21.47 m	70' 5.27"	6400 kg	14,109 lbs
24.00 m*	78' 8.88"	5430 kg	11,971 lbs
26.54 m*	87' 0.88"	4870 kg	10,736 lbs

* Manual extension boom

HK 210.00 S8+L5+2 Lifting Capacity



Main Bom
1. Manual Ext.
Max 5430 kg

Main Bom
2. Manual Ext.
Max 4870 kg

Jib Bom
1. Manual Ext.
Max 1070 kg

Jib Bom
2. Manual Ext.
Max 930 kg

- * Lifting capacities of the main boom are to be considered when the fly jib is not installed.
- * In vertical and horizontal distances, boom deflections are not calculated.
- * Fly jib and Main boom load capacities are valid when manual extensions are not installed.
- * Lifting capacities may vary around $\pm 5\%$
- * Subject to change without prior notice.
- * In the case of working in front of the cab area and / or on a surface where outrigger jacks are not balanced, all the responsibility belongs to the user.

A

FLY JIB	Feet&Inch	32000 kg	70,547 lbs
5.62 m	18' 5.25"	6600 kg	14,550 lbs
7.15 m	23' 5.49"	4330 kg	9,546 lbs
8.74 m	28' 8.09"	2980 kg	6,569 lbs
10.43 m	34' 2.62"	2230 kg	4,916 lbs
12.18 m	39' 11.52"	1740 kg	3,836 lbs
14.00 m	45' 11.18"	1420 kg	3,130 lbs
15.90 m*	52' 1.98"	1070 kg	2,358 lbs
17.80 m*	58' 4.78"	930 kg	2,050 lbs

* Manual extension boom

HK 210.00 S8+L5+2 Lifting Capacity

B

FLY JIB	Feet&Inch	32000 kg	70,547 lbs
11.99 m	39' 4.04"	6600 kg	14,550 lbs
14.19 m	46' 6.66"	4420 kg	9,744 lbs
16.49 m	54' 1.21"	3020 kg	6,657 lbs
18.92 m	62' 0.88"	2250 kg	4,960 lbs
21.44 m	70' 4.09"	1750 kg	3,858 lbs
24.07 m	78' 11.63"	1420 kg	3,130 lbs
26.80 m*	87' 11.11"	1070 kg	2,358 lbs
29.54 m*	96' 10.99"	930 kg	2,050 lbs

* Manual extension boom

C

FLY JIB	Feet&Inch	32000 kg	70,547 lbs
20.33 m	66' 8.39"	3740 kg	8,245 lbs
22.53 m	73' 11.00"	3250 kg	7,165 lbs
24.83 m	81' 5.55"	2690 kg	5,930 lbs
27.26 m	89' 5.22"	2000 kg	4,409 lbs
29.78 m	97' 8.44"	1540 kg	3,395 lbs
32.40 m	106' 3.59"	1250 kg	2,755 lbs
35.14 m*	115' 3.46"	930 kg	2,050 lbs
37.88 m*	124' 3.33"	800 kg	1,763 lbs

* Manual extension boom

D

FLY JIB	Feet&Inch	32000 kg	70,547 lbs
25.95 m	85' 1.65"	2830 kg	6,239 lbs
28.15 m	92' 4.26"	2510 kg	5,533 lbs
30.45 m	99' 10.81"	2130 kg	4,695 lbs
32.88 m	107' 10.48"	1560 kg	3,439 lbs
35.40 m	116' 1.70"	1180 kg	2,601 lbs
38.02 m	124' 8.85"	950 kg	2,094 lbs
40.76 m*	133' 8.72"	670 kg	1,477 lbs
43.50 m*	142' 8.59"	570 kg	1,256 lbs

* Manual extension boom