

# HK 30 E8

LOADER CRANE



**HIDROKON**



*Agility is With You!*

# **HK 30 E8 Loader Crane**













*With high quality equipment,  
superior capability and  
maximum safety features.*







## FEATURES

-  Proportional Control Valve
-  Crane Radio Remote Control
-  Outrigger Radio Remote Control
-  Automatic Outrigger Leveling
-  Outrigger Control System
-  Load Weighing System
-  Variable Displacement Pump
-  Automatic Lubrication
-  Hoisting Winch
-  Load Case
-  Load Case Extension
-  Oil Tank 150 l

## Technical Specifications

Max. Hydraulic Vertical Outreach	24.84 m	81' 5.95"
Max. Manual Vertical Outreach	27.12 m	88' 11.71"
Working Pressure	350 bar	5076 psi
Rotation Angle	∞ Endless	∞ Endless
Number Of Hydraulic Extensions	8	8
Number Of Manual Extensions	1	1
Oil Tank Capacity	150 l	150 l
Dead Weight(Std.)	4600 kg	10,141 lbs



## Crane Attachments

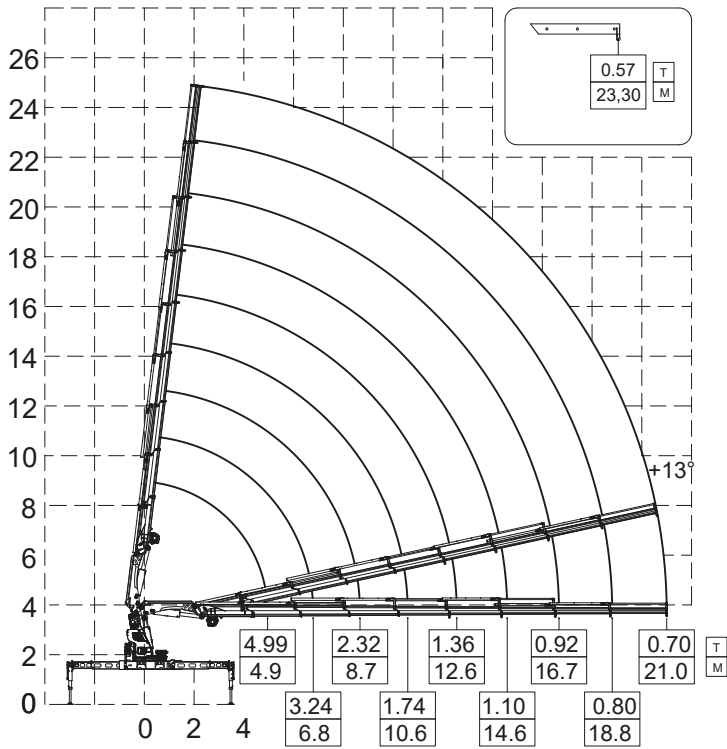
<ul style="list-style-type: none"> <li>● Available</li> <li>✕ Not Available</li> </ul>	<b>Hoisting Winch Single Line</b> <b>1988 KG</b>	<b>Counter Weight</b>	<b>Load Case Extension</b>	<b>5th-6th Stabilizers</b>	<b>Manual Extension Booms</b>
<b>HK 30</b>	●	✕	●	✕	●

## Other Attachments

- Double Hook
- Body Apparatus For Utility Pole
- Hook Block - Single Sheave
- Pallet Fork

- Towing Equipment
- Angular Extension Boom
- H Frame Lifting Beam
- Angular Extension Boom (Angle Adjustable)

## HK 30 E8 Lifting Capacity



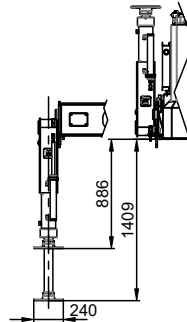
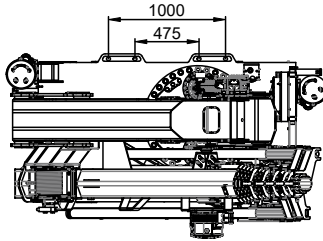
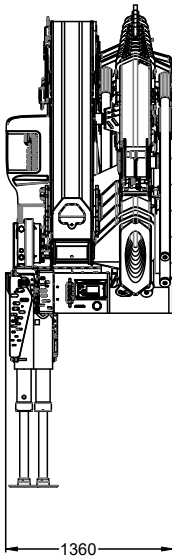
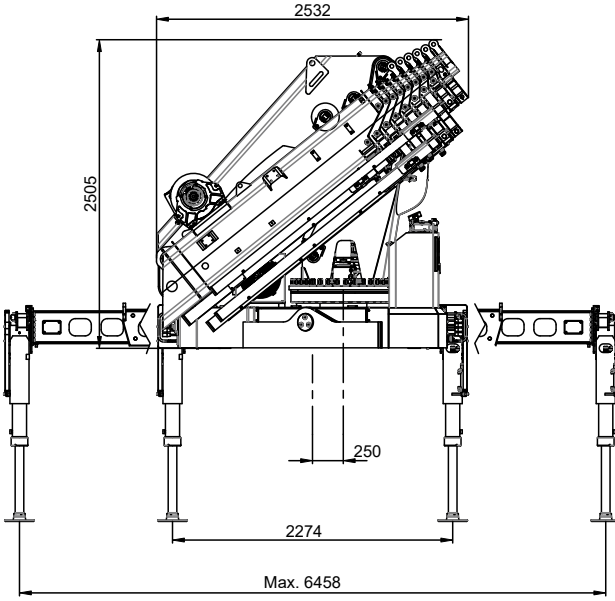
• Boom deflections are not taken into consideration.

\*In the case of working in front of the cab area and / or on a surface where outrigger jacks are not balanced, all the responsibility belongs to the user.

max.	Feet&Inch	30000 kg	66,138 lbs
4.90 m	16' 0.91"	4990 kg	11,001 lbs
6.80 m	22' 3.71"	3240 kg	7,142 lbs
8.70 m	28' 6.51"	2320 kg	5,114 lbs
10.60 m	34' 9.32"	1740 kg	3,836 lbs
12.60 m	41' 4.06"	1360 kg	2,998 lbs
14.60 m	47' 10.80"	1100 kg	2,425 lbs
16.70 m	54' 9.48"	920 kg	2,028 lbs
18.80 m	61' 8.15"	800 kg	1,763 lbs
21.00 m	68' 10.77"	700 kg	1,543 lbs
23.30 m*	76' 5.32"	570 kg	1,256 lbs

\* Manual extension boom

**Dimensions (mm)**



\*Dimensions given may vary around  $\pm$  %5.