

# HK 390.00 S9+L6

KNUCKLE BOOM CRANE



**HIDROKON**



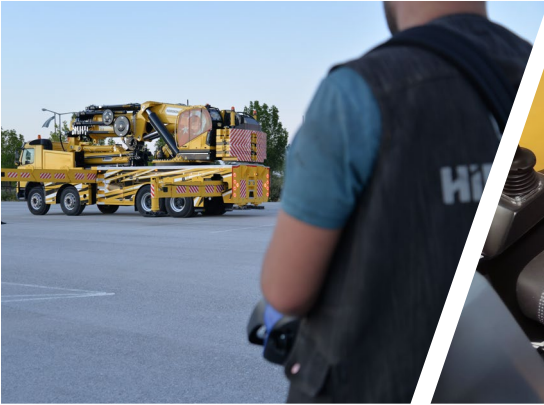
*Strength in Your Favor!*

# **HK 390.00 S9+L6 Knuckle Boom Crane**

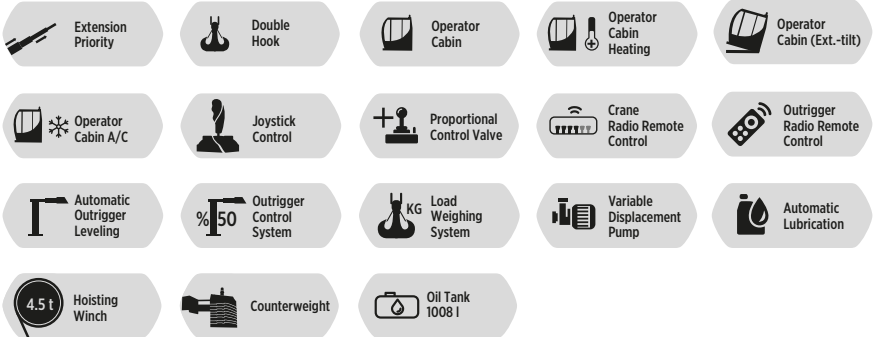
*With high quality equipment,  
superior capability and  
maximum safety features.*







## FEATURES



## Crane Attachments

● Available ✗ Not Available	Fly Jib	Hoisting Winch Single Line	Hoisting Winch Single Line	Hoisting Winch Single Line	Hoisting Winch Single Line
		1937 KG	3059 KG	3569 KG	4588 KG
<b>HK 390.00</b>	●	✗	✗	●	●

● Available ✗ Not Available	Counter Weight	Load Case Extension	5th-6th Stabilizers	Manual Extension Booms
<b>HK 390.00</b>	●	✗	●	●

## Other Attachments

Double Hook

Body Apparatus For Utility Pole

Hook Block - Single Sheave

Pallet Fork

Towing Equipment

Angular Extension Boom

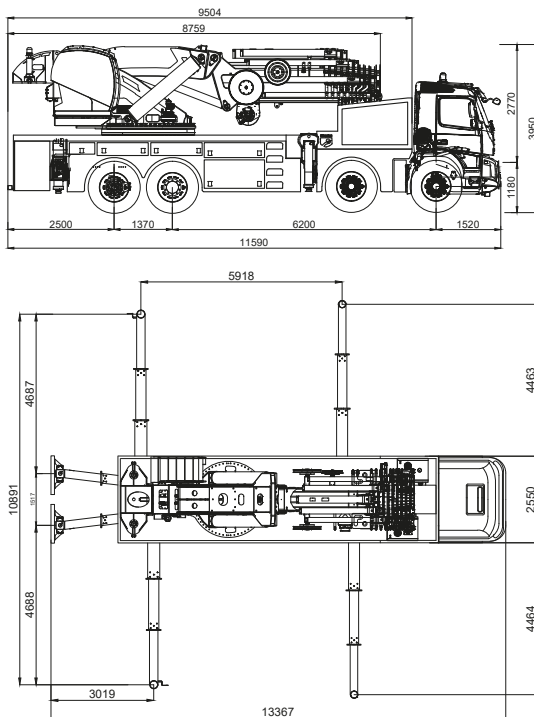
H Frame Lifting Beam

Angular Extension Boom  
(Angle Adjustable)

## Technical Specifications

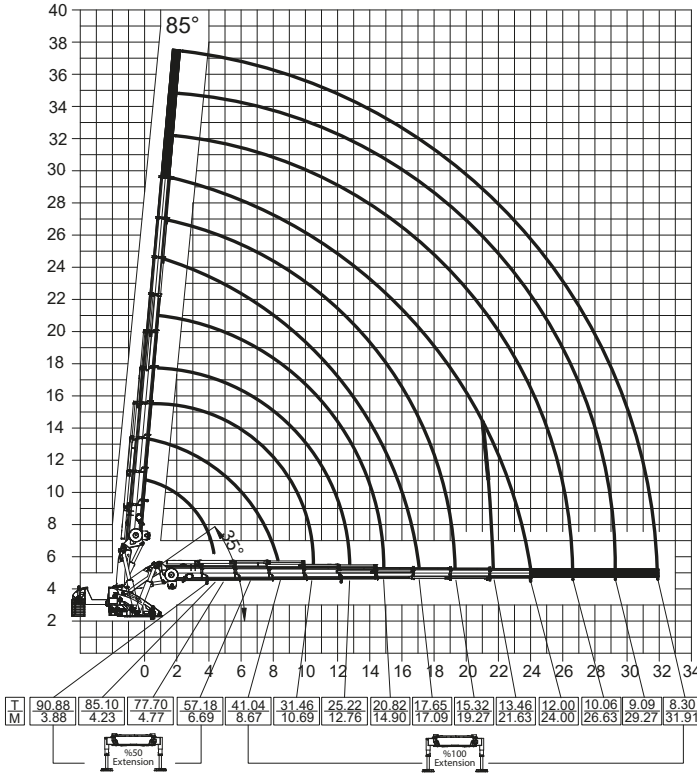
Max. Hydraulic Vertical Outreach	29.55 m	96' 11.38"
Max. Manual Vertical Outreach	37.44 m	122' 10.01"
Max. Hydraulic Vertical Outreach With Fly Jib	50.65 m	166' 0.09"
Max. Manual Vertical Outreach With Fly Jib	60.03 m	196' 11.38"
Working Pressure	300 bar	4351 psi
Rotation Angle	∞ (Endless)	∞ (Endless)
Number Of Hydraulic Extensions	9	9
Number Of Hydraulic Extensions Of Fly Jib	6	6
Number Of Manual Extensions	3	3
Number Of Manual Extensions Of Fly Jib	3	3
Counter Weight	10 x 1125 kg	10 x 2480 lbs
Oil Tank Capacity	1008 l	1008 l
Dead Weight (Std.)	40680 kg	89,684 lbs
Dead Weight (Std.) With Fly Jib	46860 kg	103,309 lbs

## Dimensions (mm)



\*Vehicle model selection may vary depending on country highway regulations, the image above is for illustration purposes only.

# HK390.00 S9+3 Lifting Capacity



(%100)

240°  
FRONT

Main Boom  
1. Manual Ext.  
Max 10060 kg

Main Boom  
2. Manual Ext.  
Max 9090 kg

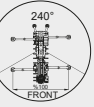
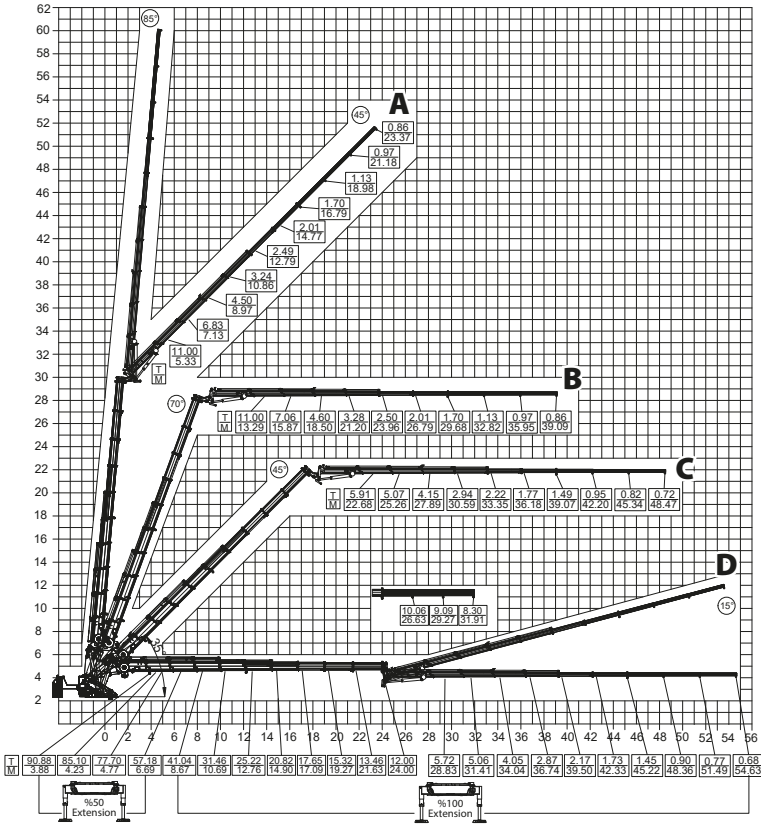
Main Boom  
3. Manual Ext.  
Max 8300 kg

- \* Lifting capacities of the main boom are valid when manual extensions are not installed .
- \* In vertical and horizontal distances , boom deflections are not calculated .
- \* Subject to change without prior notice.
- \* In the case of working in front of the cab area and / or on a surface where outrigger jacks are not balanced, all the responsibility belongs to the user.

max.	Feet&Inch	130000 kg	286,600 lbs
3.88 m	12' 8.75"	90880 kg	200,356 lbs
4.23 m	13' 10.53"	85100 kg	187,613 lbs
4.77 m	15' 7.79"	77700 kg	171,299 lbs
6.69 m	21' 11.38"	57180 kg	126,060 lbs
8.67 m	28' 5.33"	41040 kg	90,477 lbs
10.69 m	35' 0.86"	31460 kg	69,357 lbs
12.76 m	41' 10.36"	25220 kg	55,600 lbs
14.90 m	48' 10.61"	20820 kg	45,900 lbs
17.09 m	56' 0.83"	17650 kg	38,911 lbs
19.27 m	63' 2.66"	15320 kg	33,774 lbs
21.63 m	70' 11.57"	13460 kg	29,674 lbs
24.00 m	78' 8.88"	12000 kg	26,455 lbs
26.63 m*	87' 4.42"	10060 kg	22,178 lbs
29.27 m*	96' 0.36"	9090 kg	20,040 lbs
31.91 m*	104' 8.29"	8300 kg	18,298 lbs

\* Manual extension boom

# HK390.00 S9+L6+3 Lifting Capacity



Main Boom  
1. Manual Ext.  
Max 10060 kg

Main Boom  
2. Manual Ext.  
Max 9090 kg

Main Boom  
3. Manual Ext.  
Max 8300 kg

Jib Boom  
1. Manual Ext.  
Max 1130 kg

Jib Boom  
2. Manual Ext.  
Max 970 kg

Jib Boom  
3. Manual Ext.  
Max 860 kg

\* Lifting capacities of the main boom are to be considered when the fly jib is not installed.

\* In vertical and horizontal distances, boom deflections are not calculated.

\* Fly jib load capacities are valid when manual extensions are not installed.

\* Subject to change without prior notice.

\* In the case of working in front of the cab area and / or on a surface where outrigger jacks are not balanced, all the responsibility belongs to the user.

## A

FLY JIB	Feet&Inch	52000 kg	114,640 lbs
5.33 m	17' 5.84"	11000 kg	24,250 lbs
7.13 m	23' 4.70"	6830 kg	15,057 lbs
8.97 m	29' 5.14"	4500 kg	9,920 lbs
10.86 m	35' 7.55"	3240 kg	7,142 lbs
12.79 m	41' 11.54"	2490 kg	5,489 lbs
14.77 m	48' 5.49"	2010 kg	4,431 lbs
16.79 m	55' 1.02"	1700 kg	3,747 lbs
18.98 m*	62' 3.24"	1130 kg	2,491 lbs
21.18 m*	69' 5.85"	970 kg	2,138 lbs
23.37 m*	76' 8.07"	860 kg	1,895 lbs

\* Manual extension boom



## HK390.00 S9+L6+3 Lifting Capacity

### B

FLY JIB	Feet&Inch	52000 kg	114,640 lbs
13.29 m	43' 7.22"	11000 kg	24,250 lbs
15.87 m	52' 0.80"	7060 kg	15,564 lbs
18.50 m	60' 8.34"	4600 kg	10,141 lbs
21.20 m	69' 6.64"	3280 kg	7,231 lbs
23.96 m	78' 7.30"	2500 kg	5,511 lbs
26.79 m	87' 10.72"	2010 kg	4,431 lbs
29.68 m	97' 4.50"	1700 kg	3,747 lbs
32.82 m*	107' 8.12"	1130 kg	2,491 lbs
35.95 m*	117' 11.35"	970 kg	2,138 lbs
39.09 m*	128' 2.97"	860 kg	1,895 lbs

\* Manual extension boom

### C

FLY JIB	Feet&Inch	52000 kg	114,640 lbs
22.68 m	74' 4.91"	5910 kg	13,029 lbs
25.26 m	82' 10.48"	5070 kg	11,177 lbs
27.89 m	91' 6.03"	4150 kg	9,149 lbs
30.59 m	100' 4.33"	2940 kg	6,481 lbs
33.35 m	109' 4.99"	2220 kg	4,894 lbs
36.18 m	118' 8.40"	1770 kg	3,902 lbs
39.07 m	128' 2.18"	1490 kg	3,284 lbs
42.20 m*	138' 5.41"	950 kg	2,094 lbs
45.34 m*	148' 9.03"	820 kg	1,807 lbs
48.47 m*	159' 0.26"	720 kg	1,587 lbs

\* Manual extension boom

### D

FLY JIB	Feet&Inch	52000 kg	114,640 lbs
28.83 m	94' 7.03"	5720 kg	12,610 lbs
31.41 m	103' 0.61"	5060 kg	11,155 lbs
34.04 m	111' 8.15"	4050 kg	8,928 lbs
36.74 m	120' 6.45"	2870 kg	6,327 lbs
39.50 m	129' 7.11"	2170 kg	4,784 lbs
42.33 m	138' 10.53"	1730 kg	3,813 lbs
45.22 m	148' 4.31"	1450 kg	3,196 lbs
48.36 m*	158' 7.93"	900 kg	1,984 lbs
51.49 m*	168' 11.16"	770 kg	1,697 lbs
54.63 m*	179' 2.78"	680 kg	1,499 lbs

\* Manual extension boom