

HK 60 YK6

KNUCKLE BOOM CRANE



HIDROKON



Convenience is With You!

HK 60 YK6 Knuckle Boom Crane

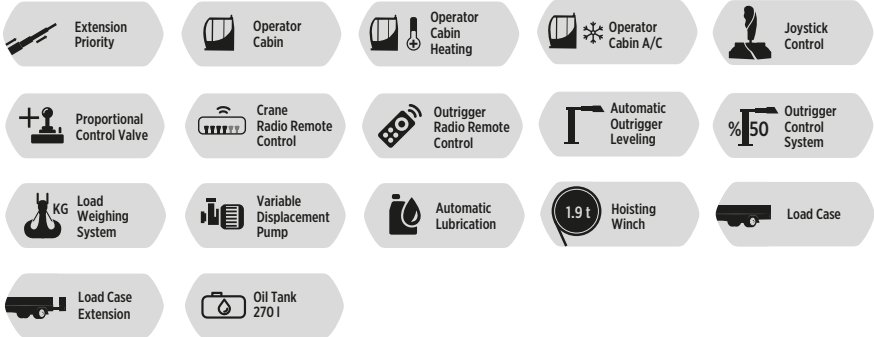
*With high quality equipment,
superior capability and
maximum safety features.*







FEATURES



Crane Attachments

● Available ✗ Not Available	Fly Jib	Hoisting Winch Single Line	Hoisting Winch Single Line	Hoisting Winch Single Line	Hoisting Winch Single Line
		1937 KG	3059 KG	3569 KG	4588 KG
HK 60 YK	✗	●	✗	✗	✗

● Available ✗ Not Available	Counter Weight	Load Case Extension	5th-6th Stabilizers	Manual Extension Booms
HK 60 YK	✗	●	✗	●

Other Attachments

Double Hook

Body Apparatus For Utility Pole

Hook Block - Single Sheave

Pallet Fork

Towing Equipment

Angular Extension Boom

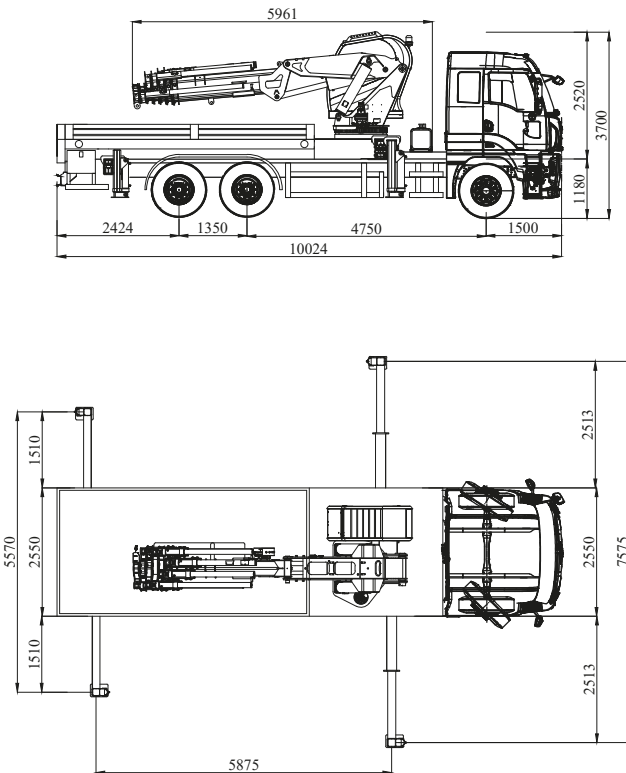
H Frame Lifting Beam

Angular Extension Boom
(Angle Adjustable)

Technical Specifications

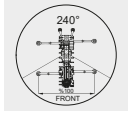
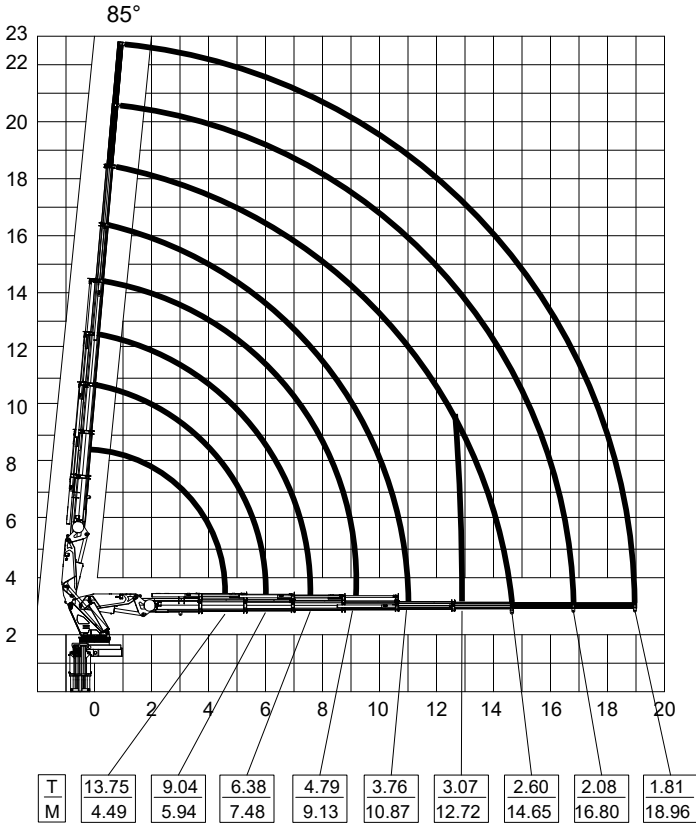
Max. Hydraulic Vertical Outreach	18.41 m	60' 4.80"
Max. Manual Vertical Outreach	22.72 m	74' 6.48"
Working Pressure	285 bar	4133 psi
Rotation Angle	∞ (Endless)	∞ (Endless)
Number Of Hydraulic Extensions	6	6
Number Of Manual Extensions	2	2
Oil Tank Capacity	270 l	270 l
Dead Weight (Std.)	12500 kg	27,557 lbs

Dimensions (mm)



*Vehicle model selection may vary depending on country highway regulations, the image above is for illustration purposes only.

HK 60 YK6+2 Lifting Capacity



Main Boom
1. Manual Ext.
Max 2080 kg

Main Boom
2. Manual Ext.
Max 1810 kg

- * Lifting capacities of the main boom are valid when manual extensions are not installed.
- * In vertical and horizontal distances, boom deflections are not calculated.
- * Subject to change without prior notice.
- * In the case of working in front of the cab area and / or on a surface where outrigger jacks are not balanced, all the responsibility belongs to the user.

max.	Feet&inch	20000 kg	44,092 lbs
4.49 m	14' 8.77"	13750 kg	30,313 lbs
5.94 m	19' 5.85"	9040 kg	19,929 lbs
7.48 m	24' 6.48"	6380 kg	14,065 lbs
9.13 m	29' 11.44"	4790 kg	10,560 lbs
10.87 m	35' 7.95"	3760 kg	8,289 lbs
12.72 m	41' 8.78"	3070 kg	6,768 lbs
14.65 m	48' 0.77"	2600 kg	5,732 lbs
16.80 m*	55' 1.41"	2080 kg	4,585 lbs
18.96 m*	62' 2.45"	1810 kg	3,990 lbs

* Manual extension boom