

HK 90 L6+L4

KNUCKLE BOOM CRANE



HIDROKON



Practicalness is With You!

HK 90 L6+L4 Knuckle Boom Crane

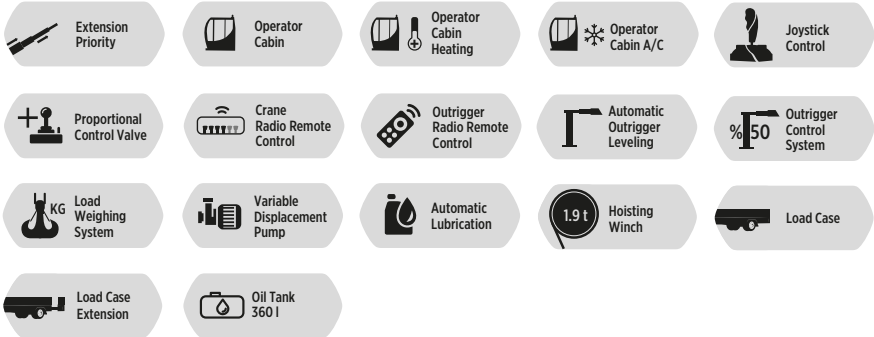
*With high quality equipment,
superior capability and
maximum safety features.*







FEATURES



Crane Attachments

● Available ✗ Not Available	Fly Jib	Hoisting Winch Single Line	Hoisting Winch Single Line	Hoisting Winch Single Line	Hoisting Winch Single Line
		1937 KG	3059 KG	3569 KG	4588 KG
HK 90	●	●	●	✗	✗

● Available ✗ Not Available	Counter Weight	Load Case Extension	5th-6th Stabilizers	Manual Extension Booms
HK 90	✗	●	✗	●

Other Attachments

Double Hook

Body Apparatus For Utility Pole

Hook Block - Single Sheave

Pallet Fork

Towing Equipment

Angular Extension Boom

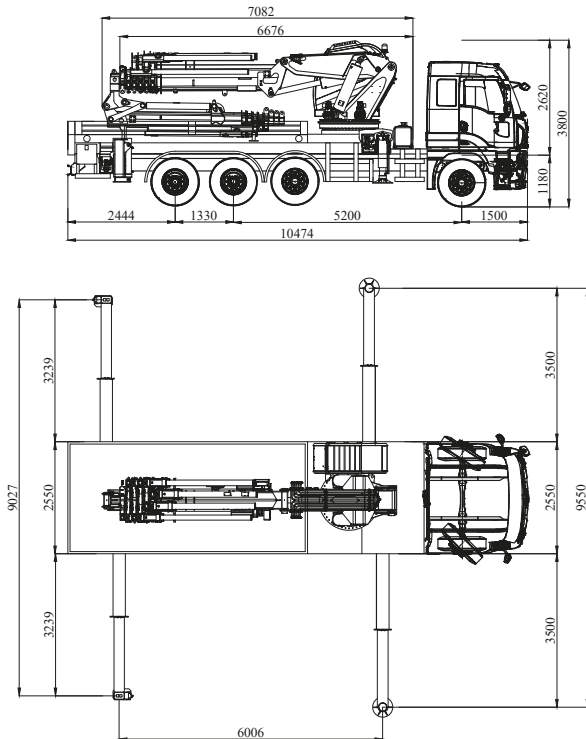
H Frame Lifting Beam

Angular Extension Boom
(Angle Adjustable)

Technical Specifications

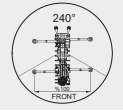
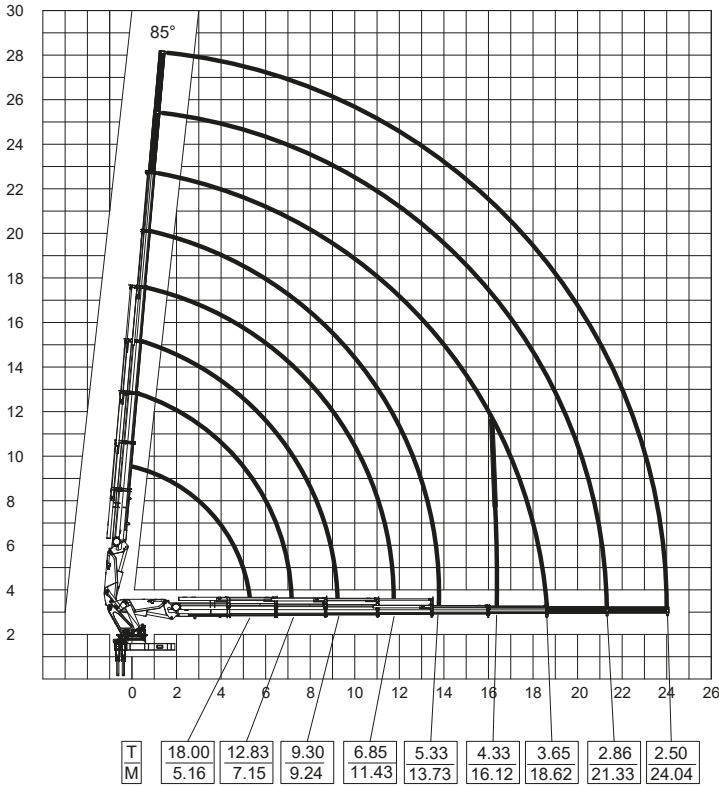
Max. Hydraulic Vertical Outreach	22.70 m	74' 5.70"
Max. Manual Vertical Outreach	28.10 m	92' 2.29"
Max. Hydraulic Vertical Outreach With Fly Jib	35.07 m	115' 0.70"
Max. Manual Vertical Outreach With Fly Jib	40.17 m	131' 9.49"
Working Pressure	285 bar	4133 psi
Rotation Angle	∞ (Endless)	∞ (Endless)
Number Of Hydraulic Extensions	6	6
Number Of Hydraulic Extensions Of Fly Jib	4	4
Number Of Manual Extensions	2	2
Number Of Manual Extensions Of Fly Jib	2	2
Oil Tank Capacity	360 l	360 l
Dead Weight (Std.)	17400 kg	38,360 lbs
Dead Weight (Std.) With Fly Jib	20100 kg	44,312 lbs

Dimensions (mm)



*Vehicle model selection may vary depending on country highway regulations, the image above is for illustration purposes only.

HK 90 L6+2 Lifting Capacity



Main Boom
1. Manual Ext.
Max 2860 kg

Main Boom
2. Manual Ext.
Max 2500 kg

* Lifting capacities of the main boom are valid when manual extensions are not installed .

* In vertical and horizontal distances , boom deflections are not calculated .

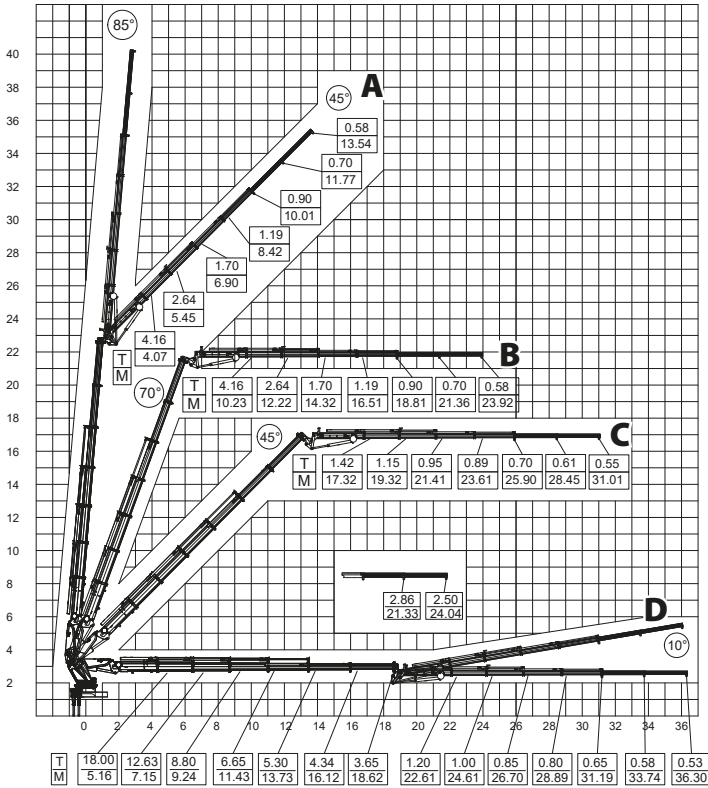
* Subject to change without prior notice.

*In the case of working in front of the cab area and / or on a surface where outrigger jacks are not balanced, all the responsibility belongs to the user.

max.	Feet&Inch	30000 kg	66,138 lbs
5.16 m	16' 11.14"	18000 kg	39,683 lbs
7.15 m	23' 5.49"	12830 kg	28,285 lbs
9.24 m	30' 3.77"	9300 kg	20,502 lbs
11.43 m	37' 5.99"	6850 kg	15,101 lbs
13.73 m	45' 0.55"	5330 kg	11,750 lbs
16.12 m	52' 10.64"	4330 kg	9,546 lbs
18.62 m	61' 1.07"	3650 kg	8,046 lbs
21.33 m*	69' 11.76"	2860 kg	6,305 lbs
24.04 m*	78' 10.45"	2500 kg	5,511 lbs

* Manual extension boom

HK 90 L6+L4+2 Lifting Capacity



240°
FRONT

Main Boom 1, Manual Ext.

Max 2860 kg

Main Boom 2, Manual Ext.

Max 2500 kg

Jib Boom 1, Manual Ext.

Max 700 kg

Jib Boom 2, Manual Ext.

Max 580 kg

- * Lifting capacities of the main boom are to be considered when the fly jib is not installed.
- * In vertical and horizontal distances , boom deflections are not calculated .
- * Lifting capacities may vary around ± %5
- * Subject to change without prior notice.
- * In the case of working in front of the cab area and / or on a surface where outrigger jacks are not balanced, all the responsibility belongs to the user.

A			
FLY JIB	Feet&Inch	15000 kg	33,069 lbs
4.07 m	13' 4.23"	4160 kg	9,171 lbs
5.45 m	17' 10.56"	2640 kg	5,820 lbs
6.9 m	22' 7.65"	1700 kg	3,747 lbs
8.42 m	27' 7.49"	1190 kg	2,623 lbs
10.01 m	32' 10.09"	900 kg	1,984 lbs
11.77 m*	38' 7.38"	700 kg	1,543 lbs
13.54 m*	44' 5.07"	580 kg	1,278 lbs

* Manual extension boom

HK 90 L6+L4+2 Lifting Capacity

B

FLY JIB	Feet&Inch	15000 kg	33,069 lbs
10.23 m	33' 6.75"	4160 kg	9,171 lbs
12.22 m	40' 1.1"	2640 kg	5,820 lbs
14.32 m	46' 11.77"	1700 kg	3,747 lbs
16.51 m	54' 1.99"	1190 kg	2,623 lbs
18.81 m	61' 8.55"	900 kg	1,984 lbs
21.36 m*	70' 0.94"	700 kg	1,543 lbs
23.92 m*	78' 5.73"	580 kg	1,278 lbs

* Manual extension boom

C

FLY JIB	Feet&Inch	15000 kg	33,069 lbs
17.32 m	56' 9.88"	1420 kg	3,130 lbs
19.32 m	63' 4.62"	1150 kg	2,535 lbs
21.41 m	70' 2.91"	950 kg	2,094 lbs
23.61 m	77' 5.52"	890 kg	1,962 lbs
25.90 m	84' 11.68"	700 kg	1,543 lbs
28.45 m*	93' 4.07"	610 kg	1,344 lbs
31.01 m*	101' 8.86"	550 kg	1,212 lbs

* Manual extension boom

D

FLY JIB	Feet&Inch	15000 kg	33,069 lbs
22.61 m	74' 2.15"	1200 kg	2,645 lbs
24.61 m	80' 8.89"	1000 kg	2,204 lbs
26.70 m	87' 7.18"	850 kg	1,873 lbs
28.89 m	94' 9.40"	800 kg	1,763 lbs
31.19 m	102' 3.95"	650 kg	1,433 lbs
33.74 m*	110' 8.34"	580 kg	1,278 lbs
36.30 m*	119' 1.13"	530 kg	1,168 lbs

* Manual extension boom