

HK 90 YKL6 + L4

KNUCKLE BOOM CRANE



HIDROKON



Practicalness is With You!

HK 90 YKL6 + L4 Knuckle Boom Crane

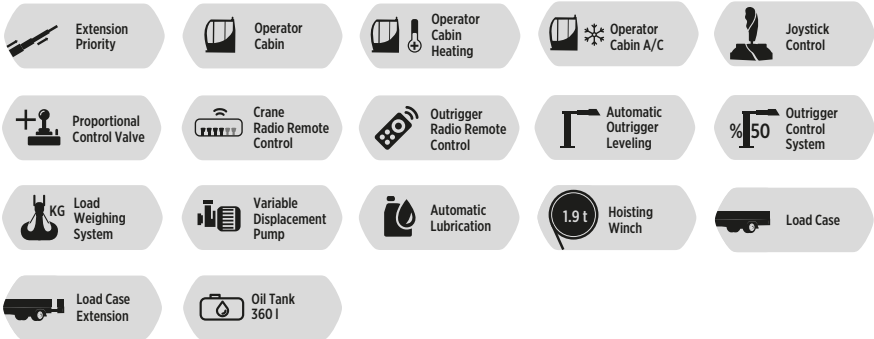
*With high quality equipment,
superior capability and
maximum safety features.*







FEATURES



Crane Attachments

● Available ✗ Not Available	Fly Jib	Hoisting Winch Single Line	Hoisting Winch Single Line	Hoisting Winch Single Line	Hoisting Winch Single Line
		1937 KG	3059 KG	3569 KG	4588 KG
HK 90 YKL	●	●	●	✗	✗

● Available ✗ Not Available	Counter Weight	Load Case Extension	5th-6th Stabilizers	Manual Extension Booms
HK 90 YKL	✗	●	✗	●

Other Attachments

Double Hook

Body Apparatus For Utility Pole

Hook Block - Single Sheave

Pallet Fork

Towing Equipment

Angular Extension Boom

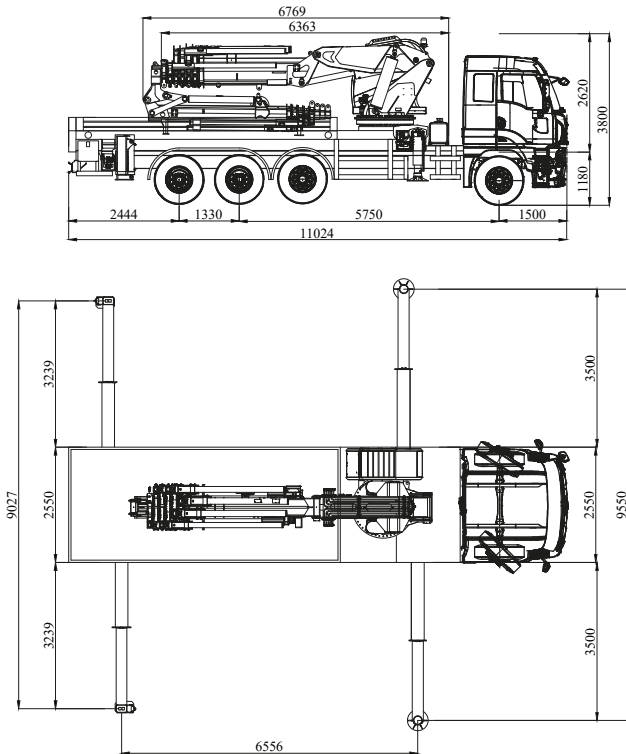
H Frame Lifting Beam

Angular Extension Boom
(Angle Adjustable)

Technical Specifications

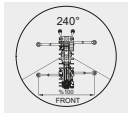
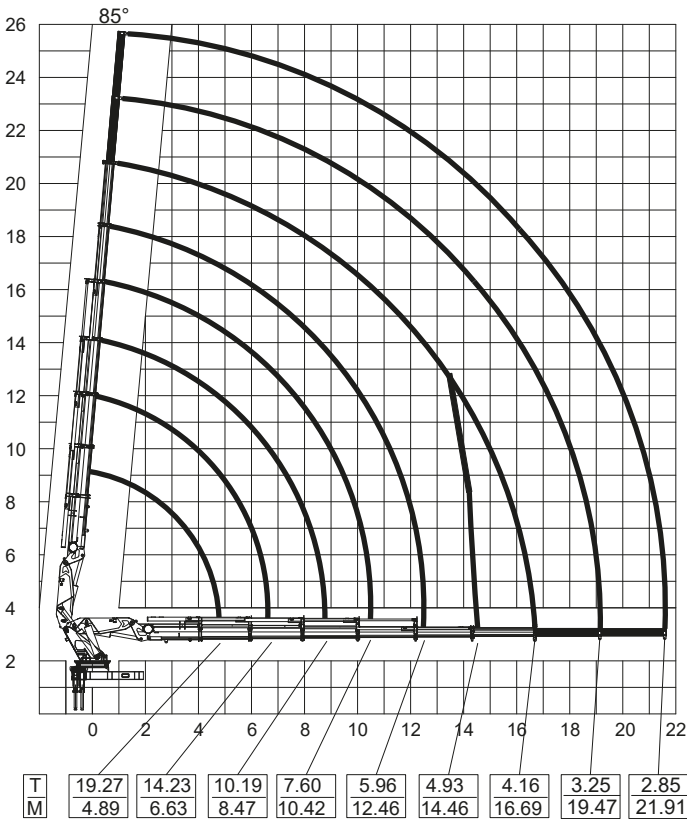
Max. Hydraulic Vertical Outreach	20.76 m	68' 1.32"
Max. Manual Vertical Outreach	25.64 m	84' 1.44"
Max. Hydraulic Vertical Outreach With Fly Jib	33.13 m	108' 8.33"
Max. Manual Vertical Outreach With Fly Jib	38.23 m	125' 5.11"
Working Pressure	285 bar	4133 psi
Rotation Angle	∞ (Endless)	∞ (Endless)
Number Of Hydraulic Extensions	6	6
Number Of Hydraulic Extensions Of Fly Jib	4	4
Number Of Manual Extensions	2	2
Number Of Manual Extensions Of Fly Jib	2	2
Oil Tank Capacity	360 l	360 l
Dead Weight (Std.)	17300 kg	38,139 lbs
Dead Weight (Std.) With Fly Jib	20000 kg	44,092 lbs

Dimensions (mm)



*Vehicle model selection may vary depending on country highway regulations, the image above is for illustration purposes only.

HK 90 YKL6+2 Lifting Capacity



Main Boom
1. Manual Ext.
Max 3250 kg

Main Boom
2. Manual Ext.
Max 2850 kg

* Lifting capacities of the main boom are valid when manual extensions are not installed.

* In vertical and horizontal distances, boom deflections are not calculated.

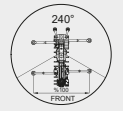
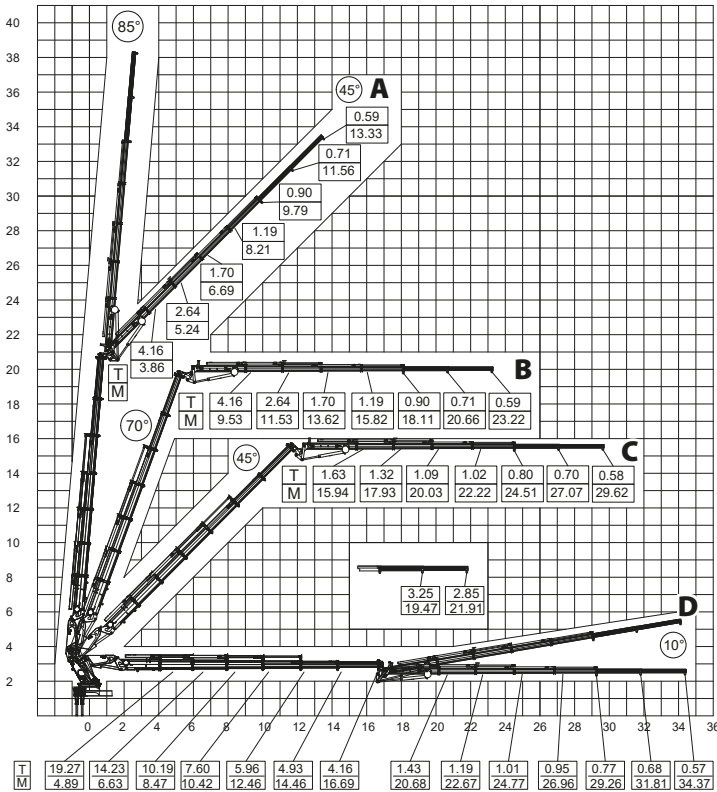
* Subject to change without prior notice.

* In the case of working in front of the cab area and / or on a surface where outrigger jacks are not balanced, all the responsibility belongs to the user.

max.	Feet&Inch	30000 kg	66,138 lbs
4.89 m	16' 0.51"	19270 kg	42,483 lbs
6.63 m	21' 9.02"	14230 kg	31,371 lbs
8.47 m	27' 9.46"	10190 kg	22,465 lbs
10.42 m	34' 2.23"	7600 kg	16,755 lbs
12.46 m	40' 10.55"	5960 kg	13,139 lbs
14.46 m	47' 5.29"	4930 kg	10,868 lbs
16.69 m	54' 9.08"	4160 kg	9,171 lbs
19.47 m*	63' 10.53"	3250 kg	7,165 lbs
21.91 m*	71' 10.59"	2850 kg	6,283 lbs

* Manual extension boom

HK 90 L6+L4+2 Lifting Capacity



Main Boom
1. Manual Ext.
Max 3250 kg

Main Boom
2. Manual Ext.
Max 2850 kg

Jib Boom
1. Manual Ext.
Max 710 kg

Jib Boom
2. Manual Ext.
Max 590 kg

- * Lifting capacities of the main boom are to be considered when the fly jib is not installed.
- * In vertical and horizontal distances, boom deflections are not calculated.
- * Lifting capacities may vary around ± 5%
- * Subject to change without prior notice.
- * In the case of working in front of the cab area and / or on a surface where outrigger jacks are not balanced, all the responsibility belongs to the user.

A

FLY JIB	Feet&Inch	15000 kg	33,069 lbs
3.86 m	12' 7.96"	4160 kg	9,171 lbs
5.24 m	17' 2.29"	2640 kg	5,820 lbs
6.69 m	21' 11.38"	1700 kg	3,747 lbs
8.21 m	26' 11.22"	1190 kg	2,623 lbs
9.79 m	32' 1.43"	900 kg	1,984 lbs
11.56 m*	37' 11.11"	710 kg	1,565 lbs
13.33 m*	43' 8.80"	590 kg	1,300 lbs

* Manual extension boom

HK 90 L6+L4+2 Lifting Capacity

B

FLY JIB	Feet&Inch	15000 kg	33,069 lbs
9.53 m	31' 3.19"	4160 kg	9,171 lbs
11.53 m	37' 9.93"	2640 kg	5,820 lbs
13.62 m	44' 8.22"	1700 kg	3,747 lbs
15.82 m	51' 10.83"	1190 kg	2,623 lbs
18.11 m	59' 4.99"	900 kg	1,984 lbs
20.66 m*	67' 9.38"	710 kg	1,565 lbs
23.22 m*	76' 2.17"	590 kg	1,300 lbs

* Manual extension boom

C

FLY JIB	Feet&Inch	15000 kg	33,069 lbs
15.94 m	52' 3.55"	1630 kg	3,593 lbs
17.93 m	58' 9.90"	1320 kg	2,910 lbs
20.03 m	65' 8.58"	1090 kg	2,403 lbs
22.22 m	72' 10.80"	1020 kg	2,248 lbs
24.51 m	80' 4.96"	800 kg	1,763 lbs
27.07 m*	88' 9.74"	700 kg	1,543 lbs
29.62 m*	97' 2.14"	580 kg	1,278 lbs

* Manual extension boom

D

FLY JIB	Feet&Inch	15000 kg	33,069 lbs
20.68 m	67' 10.17"	1430 kg	3,152 lbs
22.67 m	74' 4.51"	1190 kg	2,623 lbs
24.77 m	81' 3.19"	1010 kg	2,226 lbs
26.96 m	88' 5.41"	950 kg	2,094 lbs
29.26 m	95' 11.96"	770 kg	1,697 lbs
31.81 m*	104' 4.36"	680 kg	1,499 lbs
34.37 m*	112' 9.14"	570 kg	1,256 lbs

* Manual extension boom